

GLO1 Antibody

PACO62083

Description

This GLO1 Antibody is supplied as a kit for advanced applications. The kit includes Bradford Reagent to quantify total protein concentration for accurate sample normalization (Optional).

Product Information

SKU:	PACO62083
Contents:	50µl Bradford Reagent: 1 vial (2ml)
Category:	-
Synonyms:	GLO1 antibody, At3g14420 antibody, MAO2.2 antibody, (S)-2-hydroxy-acid oxidase GLO1 antibody, EC 1.1.3.15 antibody, Glycolate oxidase 1 antibody, AtGLO1 antibody, GOX 1 antibody, Short chain alpha-hydroxy acid oxidase GLO1 antibody
Clone:	Polyclonal
Applications:	ELISA WB
Conjugation:	Non-conjugated
Reactivity:	Arabidopsis thaliana

Antibody Data

Isotype:	IgG
Uniprot:	Q9LRR9
Host Species:	Rabbit
Purification:	>95%, Protein G purified
Immunogen:	Recombinant Arabidopsis thaliana (S)-2-hydroxy-acid oxidase GLO1 protein (1-367AA)
Immunogen Species:	Arabidopsis thaliana
Buffer:	Preservative: 0.03% Proclin 300 Constituents: 50% Glycerol, 0.01M PBS, pH 7.4
Form:	Liquid

Manufacturers Statement: This final kit system is assembled and quality-released by Assay Genie Limited.

Preparation & Storage

Storage: Upon receipt, store at -20°C or -80°C. Avoid repeated freeze.

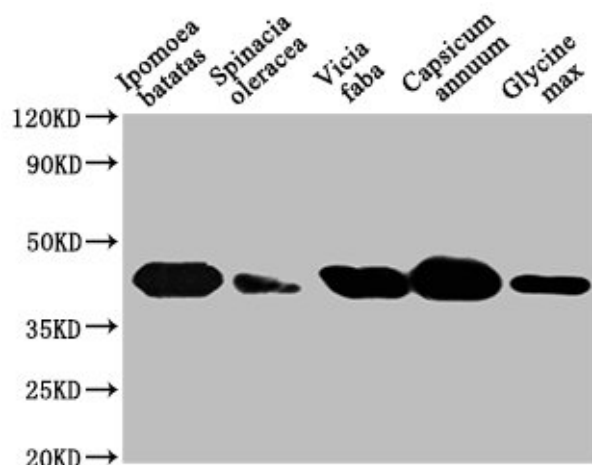
Store Bradford Reagent at Room Temperature for 1 Year.

Recommended Dilutions:	Application	Recommended Dilution
	WB	1:500-1:2000

Protein Quantification (Optional): To quantify total protein levels, use the Bradford Reagent included in this kit. Visit <https://www.assaygenie.com/bradford-protein-assay-protocol/> to view the full protocol

Validation Data

Image



Description

Western Blot Positive WB detected in: Ipomoea batatas leaf tissue, Spinacia oleracea leaf tissue, Vicia faba leaf tissue, Capsicum annuum leaf tissue, Glycine max leaf tissue All lanes: GLO1 antibody at 1:1000 Secondary Goat polyclonal to rabbit IgG at 1/50000 dilution Predicted band size: 41, 39 kDa Observed band size: 41 kDa