

## TBKBP1 Antibody

PACO62387

### Description

---

This TBKBP1 Antibody is supplied as a kit for advanced applications. The kit includes Bradford Reagent to quantify total protein concentration for accurate sample normalization (Optional).

### Product Information

---

<b>SKU:</b>	PACO62387
<b>Contents:</b>	50µl Bradford Reagent: 1 vial (2ml)
<b>Category:</b>	-
<b>Synonyms:</b>	KIAA0775 antibody, ProSAPiP2 antibody, SINTBAD antibody, TANK binding kinase 1 binding protein 1 antibody, TANK-binding kinase 1-binding protein 1 antibody, TBK1 binding protein 1 antibody, TBK1-binding protein 1 antibody, TBKB1_HUMAN antibody, Tbkbp1 antibody
<b>Clone:</b>	Polyclonal
<b>Applications:</b>	<a href="#">ELISA</a> <a href="#">IF</a>
<b>Conjugation:</b>	Non-conjugated
<b>Reactivity:</b>	Human

### Antibody Data

---

<b>Isotype:</b>	IgG
<b>Uniprot:</b>	A7MCY6
<b>Host Species:</b>	Rabbit
<b>Purification:</b>	>95%, Protein G purified
<b>Immunogen:</b>	Recombinant Human TANK-binding kinase 1-binding protein 1 protein (327-427AA)
<b>Immunogen Species:</b>	Homo sapiens (Human)
<b>Buffer:</b>	Preservative: 0.03% Proclin 300 Constituents: 50% Glycerol, 0.01M PBS, pH 7.4
<b>Form:</b>	Liquid

**Manufacturers Statement:** This final kit system is assembled and quality-released by Assay Genie Limited.

## Preparation & Storage

---

**Storage:** Upon receipt, store at -20°C or -80°C. Avoid repeated freeze.  
Store Bradford Reagent at Room Temperature for 1 Year.

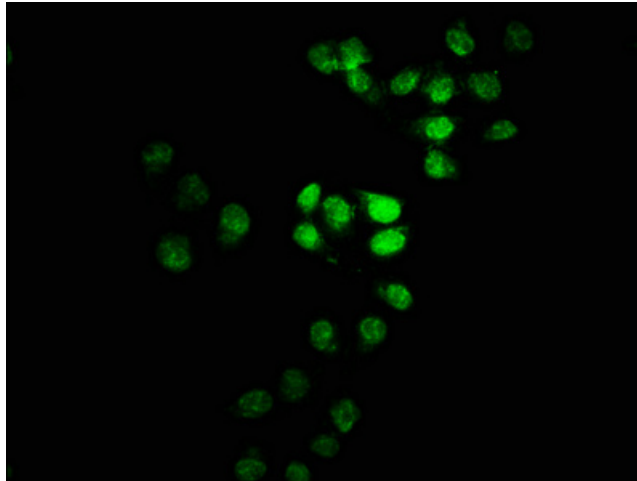
<b>Recommended Dilutions:</b>	<b>Application</b>	<b>Recommended Dilution</b>
	IF	1:50-1:200

**Protein Quantification (Optional):** To quantify total protein levels, use the Bradford Reagent included in this kit. Visit <https://www.assaygenie.com/bradford-protein-assay-protocol/> to view the full protocol

## Validation Data

---

**Image**



**Description**

Immunofluorescence staining of HeLa cells with PACO62387 at 1:100, counterstained with DAPI. The cells were fixed in 4% formaldehyde, permeabilized using 0.2% Triton X-100 and blocked in 10% normal Goat Serum. The cells were then incubated with the antibody overnight at 4°C. The secondary antibody was Alexa Fluor 488-conjugated AffiniPure Goat Anti-Rabbit IgG(H+L).