

## At1g32060 Antibody

PACO62423

### Description

---

This At1g32060 Antibody is supplied as a kit for advanced applications. The kit includes Bradford Reagent to quantify total protein concentration for accurate sample normalization (Optional).

### Product Information

---

|                      |  |
|----------------------|--|
| <b>SKU:</b>          | PACO62423  |
| <b>Contents:</b>     | 50µl<br>Bradford Reagent: 1 vial (2ml)   |
| <b>Category:</b>     | -  |
| <b>Synonyms:</b>     | At1g32060 antibody, T12O21.4Phosphoribulokinase antibody, chloroplastic antibody, PRK antibody, PRKase antibody, EC 2.7.1.19 antibody, Phosphopentokinase antibody |
| <b>Clone:</b>        | Polyclonal   |
| <b>Applications:</b> | <a href="#">ELISA</a> <a href="#">WB</a>   |
| <b>Conjugation:</b>  | Non-conjugated   |
| <b>Reactivity:</b>   | Arabidopsis thaliana   |

### Antibody Data

---

|                           |   |
|---------------------------|---|
| <b>Isotype:</b>           | IgG   |
| <b>Uniprot:</b>           | P25697  |
| <b>Host Species:</b>      | Rabbit  |
| <b>Purification:</b>      | Antigen Affinity Purified   |
| <b>Immunogen:</b>         | Peptide sequence from Arabidopsis thaliana Phosphoribulokinase, chloroplastic protein (223-235AA) |
| <b>Immunogen Species:</b> | Arabidopsis thaliana (Mouse-ear cress)  |
| <b>Buffer:</b>            | Preservative: 0.03% Proclin 300 Constituents: 50% Glycerol, 0.01M PBS, pH 7.4                     |
| <b>Form:</b>              | Liquid  |

**Manufacturers Statement:** This final kit system is assembled and quality-released by Assay Genie Limited.

## Preparation & Storage

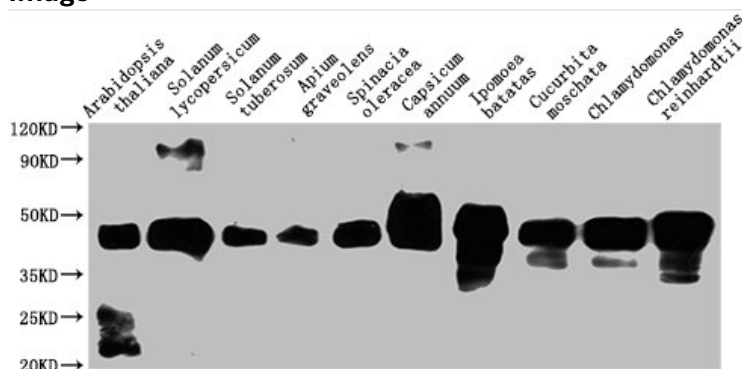
**Storage:** Upon receipt, store at -20°C or -80°C. Avoid repeated freeze.  
Store Bradford Reagent at Room Temperature for 1 Year.

| Recommended Dilutions: | Application | Recommended Dilution |
|------------------------|-------------|----------------------|
|                        | WB          | 1:1000-1:5000        |

**Protein Quantification (Optional):** To quantify total protein levels, use the Bradford Reagent included in this kit. Visit <https://www.assaygenie.com/bradford-protein-assay-protocol/> to view the full protocol

## Validation Data

### Image



### Description

Western Blot Positive WB detected in: Arabidopsis thaliana leaf tissue, Solanum lycopersicum leaf tissue, Solanum tuberosum leaf tissue, Apium graveolens tissue, Spinacia oleracea leaf tissue, Capsicum annuum leaf tissue, Ipomoea batatas leaf tissue, Cucurbita moschata leaf tissue, Chlamydomonas tissue, Chlamydomonas reinhardtii tissue All lanes: At1g32060 antibody at 1:2000 Secondary Goat polyclonal to rabbit IgG at 1/50000 dilution Predicted band size: 45 kDa Observed band size: 45 kDa