

ppsA Antibody

PACO62427

Description

This ppsA Antibody is supplied as a kit for advanced applications. The kit includes Bradford Reagent to quantify total protein concentration for accurate sample normalization (Optional).

Product Information

SKU:	PACO62427
Contents:	50µl Bradford Reagent: 1 vial (2ml)
Category:	-
Synonyms:	ppsA antibody, pps antibody, b1702 antibody, JW1692Phosphoenolpyruvate synthase antibody, PEP synthase antibody, EC 2.7.9.2 antibody, Pyruvate antibody, water dikinase antibody
Clone:	Polyclonal
Applications:	ELISA WB
Conjugation:	Non-conjugated
Reactivity:	Escherichia coli

Antibody Data

Isotype:	IgG
Uniprot:	P23538
Host Species:	Rabbit
Purification:	>95%, Protein G purified
Immunogen:	Recombinant Escherichia coli Phosphoenolpyruvate synthase protein (2-792AA)
Immunogen Species:	Escherichia coli(strain K12)
Buffer:	Preservative: 0.03% Proclin 300 Constituents: 50% Glycerol, 0.01M PBS, pH 7.4
Form:	Liquid

Preparation & Storage

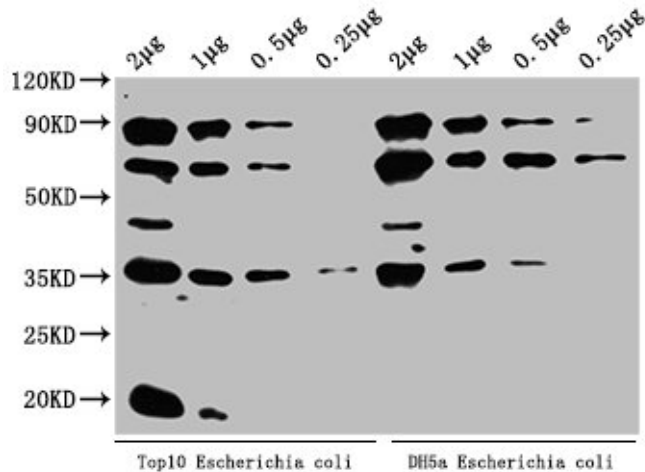
Storage: Upon receipt, store at -20°C or -80°C. Avoid repeated freeze.
Store Bradford Reagent at Room Temperature for 1 Year.

Recommended Dilutions:	Application	Recommended Dilution
	WB	1:1000-1:5000

Protein Quantification (Optional): To quantify total protein levels, use the Bradford Reagent included in this kit. Visit <https://www.assaygenie.com/bradford-protein-assay-protocol/> to view the full protocol

Validation Data

Image



Description

Western Blot Positive WB detected in: Top10 Escherichia coli lysate, DH5a Escherichia coli lysate All lanes: ppsA antibody at 1:2000 Secondary Goat polyclonal to rabbit IgG at 1/50000 dilution Predicted band size: 88 kDa Observed band size: 88 kDa