

ATP2B3 Antibody

PACO62447

Description

This ATP2B3 Antibody is supplied as a kit for advanced applications. The kit includes Bradford Reagent to quantify total protein concentration for accurate sample normalization (Optional).

Product Information

SKU:	PACO62447
Contents:	50µl Bradford Reagent: 1 vial (2ml)
Category:	-
Synonyms:	ATP2B3Plasma membrane calcium-transporting ATPase 3 antibody, PMCA3 antibody, EC 7.2.2.10 antibody, Plasma membrane calcium ATPase isoform 3 antibody, Plasma membrane calcium pump isoform 3 antibody
Clone:	Polyclonal
Applications:	ELISA WB IF
Conjugation:	Non-conjugated
Reactivity:	Human

Antibody Data

Isotype:	IgG
Uniprot:	Q16720
Host Species:	Rabbit
Purification:	>95%, Protein G purified
Immunogen:	Recombinant Human Plasma membrane calcium-transporting ATPase 3 protein (1057-1220AA)
Immunogen Species:	Homo sapiens (Human)
Buffer:	Preservative: 0.03% Proclin 300 Constituents: 50% Glycerol, 0.01M PBS, pH 7.4
Form:	Liquid

Manufacturers Statement: This final kit system is assembled and quality-released by Assay Genie Limited.

Preparation & Storage

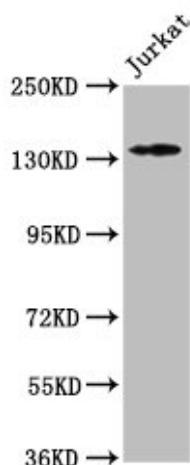
Storage: Upon receipt, store at -20°C or -80°C. Avoid repeated freeze.
Store Bradford Reagent at Room Temperature for 1 Year.

Recommended Dilutions:	Application	Recommended Dilution
	WB	1:100-1:1000
	IF	1:20-1:200

Protein Quantification (Optional): To quantify total protein levels, use the Bradford Reagent included in this kit. Visit <https://www.assaygenie.com/bradford-protein-assay-protocol/> to view the full protocol

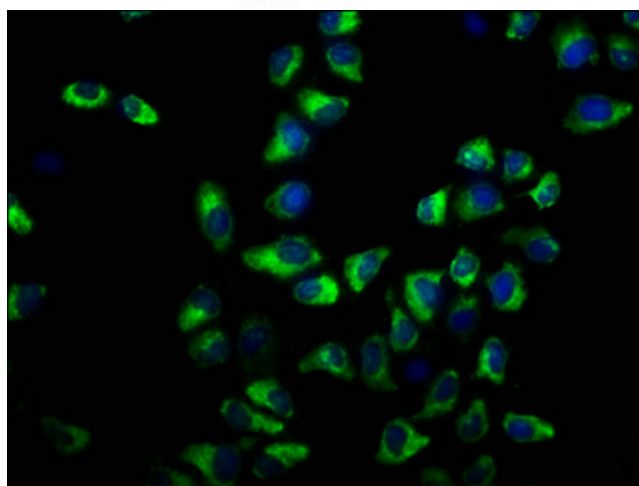
Validation Data

Image



Description

Western Blot Positive WB detected in: Jurkat whole cell lysate All lanes: ATP2B3 antibody at 1:500 Secondary Goat polyclonal to rabbit IgG at 1/50000 dilution Predicted band size: 135, 129, 128, 133, 127, 125, 123 kDa Observed band size: 135 kDa



Immunofluorescence staining of HeLa cells with PACO62447 at 1:33, counter-stained with DAPI. The cells were fixed in 4% formaldehyde, permeabilized using 0.2% Triton X-100 and blocked in 10% normal Goat Serum. The cells were then incubated with the antibody overnight at 4°C. The secondary antibody was Alexa Fluor 488-conjugated AffiniPure Goat Anti-Rabbit IgG(H+L).