

## sdeA Antibody

PACO63047

### Description

---

This sdeA Antibody is supplied as a kit for advanced applications. The kit includes Bradford Reagent to quantify total protein concentration for accurate sample normalization (Optional).

### Product Information

---

<b>SKU:</b>	PACO63047
<b>Contents:</b>	50µl Bradford Reagent: 1 vial (2ml)
<b>Category:</b>	-
<b>Synonyms:</b>	sdeA antibody, lpg2157 antibody, Ubiquitinating/deubiquitinating enzyme SdeA antibody, Effector protein SdeA) [Includes: Deubiquitinase antibody, DUB antibody, EC 3.4.22.- antibody, Deneddylase antibody, Deubiquitinating enzyme), Ubiquitin transferase antibody, EC 2.3.2.-), Mono-ADP-ribosyltransferase antibody, mART antibody, EC 2.4.2.31]] antibody
<b>Clone:</b>	Polyclonal
<b>Applications:</b>	<b>ELISA</b> <b>WB</b>
<b>Conjugation:</b>	Non-conjugated
<b>Reactivity:</b>	Legionella pneumophila subsp

### Antibody Data

---

<b>Isotype:</b>	IgG
<b>Uniprot:</b>	Q5ZTK4
<b>Host Species:</b>	Rabbit
<b>Purification:</b>	>95%, Protein G purified
<b>Immunogen:</b>	Recombinant Legionella pneumophila subsp Ubiquitinating/deubiquitinating enzyme SdeA protein (19-268AA)
<b>Immunogen Species:</b>	Legionella pneumophila subsp. pneumophila (strain Philadelphia 1 / ATCC 33152 / DSM 7513)
<b>Buffer:</b>	Preservative: 0.03% Proclin 300 Constituents: 50% Glycerol, 0.01M PBS, pH 7.4

**Manufacturers Statement:** This final kit system is assembled and quality-released by Assay Genie Limited.

**Form:** Liquid

## Preparation & Storage

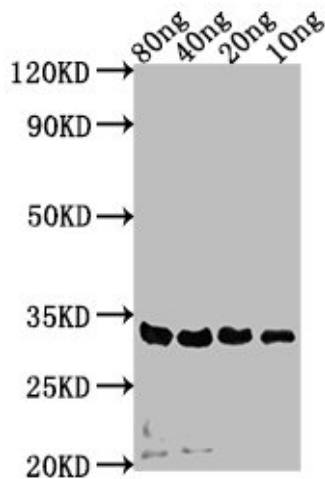
**Storage:** Upon receipt, store at -20°C or -80°C. Avoid repeated freeze. Store Bradford Reagent at Room Temperature for 1 Year.

<b>Recommended Dilutions:</b>	<b>Application</b>	<b>Recommended Dilution</b>
	WB	1:1000-1:5000

**Protein Quantification (Optional):** To quantify total protein levels, use the Bradford Reagent included in this kit. Visit <https://www.assaygenie.com/bradford-protein-assay-protocol/> to view the full protocol

## Validation Data

### Image



### Description

Western Blot Positive WB detected in Recombinant protein All lanes: sdeA antibody at 1:2000 Secondary Goat polyclonal to rabbit IgG at 1/50000 dilution Predicted band size: 32 kDa Observed band size: 32 kDa