

DVL1P1 Antibody

PACO63287

Description

This DVL1P1 Antibody is supplied as a kit for advanced applications. The kit includes Bradford Reagent to quantify total protein concentration for accurate sample normalization (Optional).

Product Information

SKU:	PACO63287
Contents:	50µl Bradford Reagent: 1 vial (2ml)
Category:	-
Synonyms:	DVL1P1 antibody, DVL antibody, DVL1 antibody, DVL1L1Putative segment polarity protein dishevelled homolog DVL1P1 antibody, DSH homolog 1-like antibody, Segment polarity protein dishevelled homolog DVL-1-like antibody, Dishevelled-1-like antibody
Clone:	Polyclonal
Applications:	ELISA WB
Conjugation:	Non-conjugated
Reactivity:	Human

Antibody Data

Isotype:	IgG
Uniprot:	P54792
Host Species:	Rabbit
Purification:	Antigen Affinity Purified
Immunogen:	Peptide sequence from Human Putative segment polarity protein dishevelled homolog DVL1P1 protein (152-173AA)
Immunogen Species:	Homo sapiens (Human)
Buffer:	Preservative: 0.03% Proclin 300 Constituents: 50% Glycerol, 0.01M PBS, pH 7.4
Form:	Liquid

Manufacturers Statement: This final kit system is assembled and quality-released by Assay Genie Limited.

Preparation & Storage

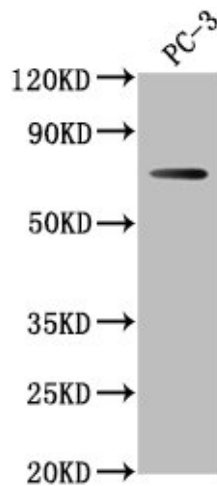
Storage: Upon receipt, store at -20°C or -80°C. Avoid repeated freeze.
Store Bradford Reagent at Room Temperature for 1 Year.

Recommended Dilutions:	Application	Recommended Dilution
	WB	1:500-1:2000

Protein Quantification (Optional): To quantify total protein levels, use the Bradford Reagent included in this kit. Visit <https://www.assaygenie.com/bradford-protein-assay-protocol/> to view the full protocol

Validation Data

Image



Description

Western Blot Positive WB detected in: PC-3 whole cell lysate All lanes: DVL1P1 antibody at 1:1000 Secondary Goat polyclonal to rabbit IgG at 1/50000 dilution Predicted band size: 74, 73 kDa Observed band size: 74 kDa