

## RHBDD3 Antibody

PACO63403

### Description

---

This RHBDD3 Antibody is supplied as a kit for advanced applications. The kit includes Bradford Reagent to quantify total protein concentration for accurate sample normalization (Optional).

### Product Information

---

<b>SKU:</b>	PACO63403
<b>Contents:</b>	50µl Bradford Reagent: 1 vial (2ml)
<b>Category:</b>	-
<b>Synonyms:</b>	C22orf3 antibody, HS984G1A antibody, Pituitary tumor apoptosis antibody, PTAG antibody, RHBD3_HUMAN antibody, RHBDD3 antibody, Rhomboid domain containing 3 antibody, Rhomboid domain-containing protein 3 antibody
<b>Clone:</b>	Polyclonal
<b>Applications:</b>	<b>ELISA</b> <b>WB</b> <b>IHC</b> <b>IF</b>
<b>Conjugation:</b>	Non-conjugated
<b>Reactivity:</b>	Human

### Antibody Data

---

<b>Isotype:</b>	IgG
<b>Uniprot:</b>	Q9Y3P4
<b>Host Species:</b>	Rabbit
<b>Purification:</b>	Antigen Affinity Purified
<b>Immunogen:</b>	Peptide sequence from Human Rhomboid domain-containing protein 3 protein (304-323AA)
<b>Immunogen Species:</b>	Homo sapiens (Human)
<b>Buffer:</b>	Preservative: 0.03% Proclin 300 Constituents: 50% Glycerol, 0.01M PBS, pH 7.4
<b>Form:</b>	Liquid

## Preparation & Storage

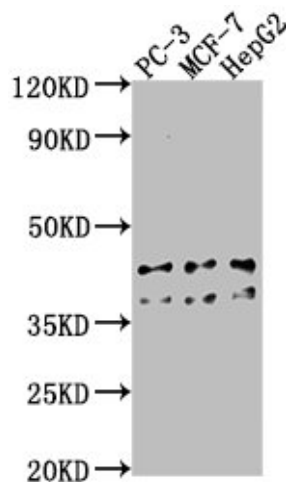
**Storage:** Upon receipt, store at -20°C or -80°C. Avoid repeated freeze. Store Bradford Reagent at Room Temperature for 1 Year.

Recommended Dilutions:	Application	Recommended Dilution
	WB	1:500-1:2000
	IHC	1:20-1:200
	IF	1:50-1:200

**Protein Quantification (Optional):** To quantify total protein levels, use the Bradford Reagent included in this kit. Visit <https://www.assaygenie.com/bradford-protein-assay-protocol/> to view the full protocol

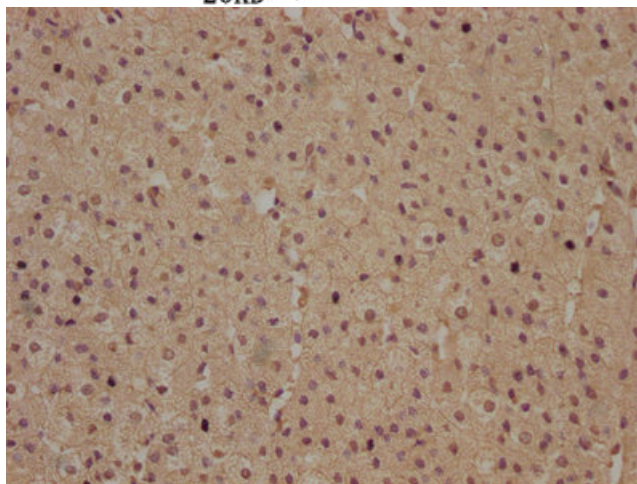
## Validation Data

### Image

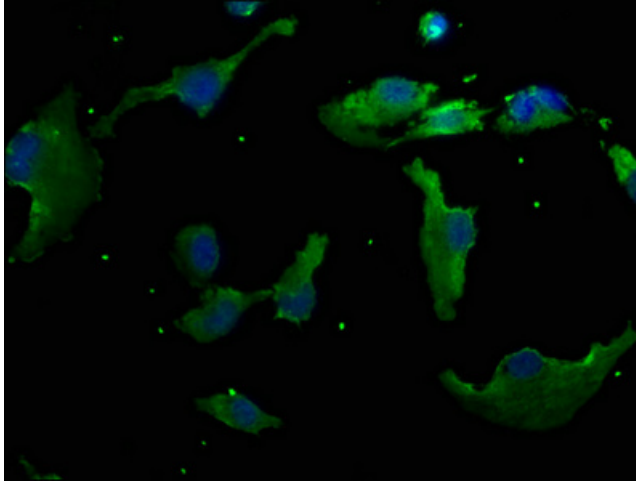


### Description

Western Blot Positive WB detected in: PC-3 whole cell lysate, MCF-7 whole cell lysate, HepG2 whole cell lysate All lanes: RHBDD3 antibody at 1:1000 Secondary Goat polyclonal to rabbit IgG at 1/50000 Predicted band size: 41 kDa Observed band size: 41 kDa



IHC image of PACO63403 diluted at 1:100 and staining in paraffin-embedded human adrenal gland tissue performed on a Leica Bond™ system. After dewaxing and hydration, antigen retrieval was mediated by high pressure in a citrate buffer (pH 6.0). Section was blocked with 10% normal goat serum 30min at RT. Then primary antibody (1% BSA) was incubated at 4°C overnight. The primary is detected by a biotinylated secondary antibody and visualized using an HRP conjugated SP system.



Immunofluorescence staining of U251 cells with PACO63403 at 1:50, counter-stained with DAPI. The cells were fixed in 4% formaldehyde, permeabilized using 0.2% Triton X-100 and blocked in 10% normal Goat Serum. The cells were then incubated with the antibody overnight at 4°C. The secondary antibody was Alexa Fluor 488-conjugated AffiniPure Goat Anti-Rabbit IgG(H+L).