

## Met Antibody

PACO63551

### Description

---

This Met Antibody is supplied as a kit for advanced applications. The kit includes Bradford Reagent to quantify total protein concentration for accurate sample normalization (Optional).

### Product Information

---

<b>SKU:</b>	PACO63551
<b>Contents:</b>	50µl Bradford Reagent: 1 vial (2ml)
<b>Category:</b>	-
<b>Synonyms:</b>	-
<b>Clone:</b>	Polyclonal
<b>Applications:</b>	<span>ELISA</span> <span>WB</span>
<b>Conjugation:</b>	Non-conjugated
<b>Reactivity:</b>	Locusta migratoria

### Antibody Data

---

<b>Isotype:</b>	IgG
<b>Uniprot:</b>	V5KYY7
<b>Host Species:</b>	Rabbit
<b>Purification:</b>	>95%, Protein G purified
<b>Immunogen:</b>	Recombinant Locusta migratoria Met protein (1-329AA)
<b>Immunogen Species:</b>	Locusta migratoria (Migratory locust)
<b>Buffer:</b>	Preservative: 0.03% Proclin 300 Constituents: 50% Glycerol, 0.01M PBS, pH 7.4
<b>Form:</b>	Liquid

## Preparation & Storage

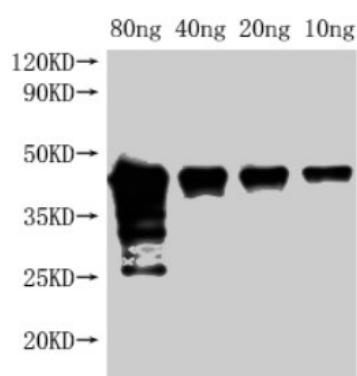
**Storage:** Upon receipt, store at -20°C or -80°C. Avoid repeated freeze.  
Store Bradford Reagent at Room Temperature for 1 Year.

Recommended Dilutions:	Application	Recommended Dilution
	WB	1:1000-1:5000

**Protein Quantification (Optional):** To quantify total protein levels, use the Bradford Reagent included in this kit. Visit <https://www.assaygenie.com/bradford-protein-assay-protocol/> to view the full protocol

## Validation Data

### Image



### Description

Western Blot Positive WB detected in Recombinant protein All lanes: Met antibody at 1:2000 Secondary Goat polyclonal to rabbit IgG at 1/50000 dilution  
Predicted band size: 42 kDa Observed band size: 45 kDa