

CAMK2N2 Antibody

PACO63631

Description

This CAMK2N2 Antibody is supplied as a kit for advanced applications. The kit includes Bradford Reagent to quantify total protein concentration for accurate sample normalization (Optional).

Product Information

SKU:	PACO63631
Contents:	50µl Bradford Reagent: 1 vial (2ml)
Category:	-
Synonyms:	CAMK2N2Calcium/calmodulin-dependent protein kinase II inhibitor 2 antibody, CaM-KII inhibitory protein antibody, CaM-KIIN antibody
Clone:	Polyclonal
Applications:	ELISA IF
Conjugation:	Non-conjugated
Reactivity:	Human

Antibody Data

Isotype:	IgG
Uniprot:	Q96S95
Host Species:	Rabbit
Purification:	Antigen Affinity Purified
Immunogen:	Peptide sequence from Human Calcium/calmodulin-dependent protein kinase II inhibitor 2 protein (10-28AA)
Immunogen Species:	Homo sapiens (Human)
Buffer:	Preservative: 0.03% Proclin 300 Constituents: 50% Glycerol, 0.01M PBS, pH 7.4
Form:	Liquid

Preparation & Storage

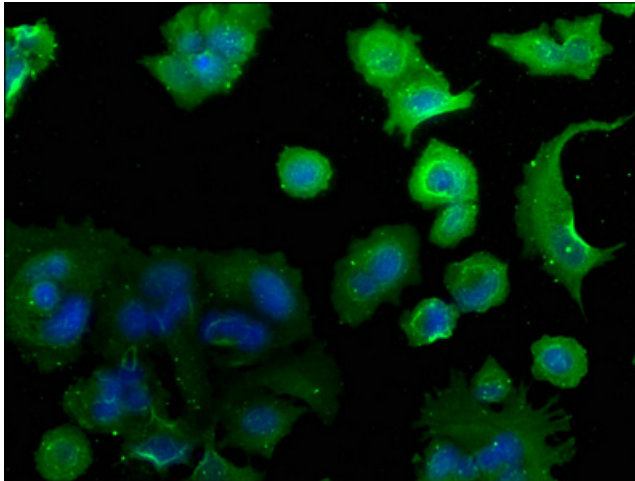
Storage: Upon receipt, store at -20°C or -80°C. Avoid repeated freeze.
Store Bradford Reagent at Room Temperature for 1 Year.

Recommended Dilutions:	Application	Recommended Dilution
	IF	1:50-1:200

Protein Quantification (Optional): To quantify total protein levels, use the Bradford Reagent included in this kit. Visit <https://www.assaygenie.com/bradford-protein-assay-protocol/> to view the full protocol

Validation Data

Image



Description

Immunofluorescence staining of MCF-7 cells with PACO63631 at 1:50, counterstained with DAPI. The cells were fixed in 4% formaldehyde, permeabilized using 0.2% Triton X-100 and blocked in 10% normal Goat Serum. The cells were then incubated with the antibody overnight at 4°C. The secondary antibody was Alexa Fluor 488-conjugated AffiniPure Goat Anti-Rabbit IgG(H+L).