

SHISA9 Antibody

PACO63767

Description

This SHISA9 Antibody is supplied as a kit for advanced applications. The kit includes Bradford Reagent to quantify total protein concentration for accurate sample normalization (Optional).

Product Information

SKU:	PACO63767
Contents:	50µl Bradford Reagent: 1 vial (2ml)
Category:	-
Synonyms:	2700045P11Rik antibody, CKAMP44 antibody, Cystine knot AMPAR modulating protein antibody, Cystine knot AMPAR receptor-modulating protein, 44-KD antibody, DKFZp686D24206 antibody, DKFZp686E24206 antibody, FLJ10015 antibody, FLJ37653 antibody, FLJ58277 antibody, FLJ99079 antibody, FLJ99234 antibody, Protein shisa-9 antibody, shisa family member 9 antibody, Shisa homolog 9 (Xenopus laevis) antibody, Shisa homolog 9 antibody, shisa, Xenopus, homolog of, 9 antibody, shisa9 antibody, SHSA9_HUMAN antibody
Clone:	Polyclonal
Applications:	ELISA IF
Conjugation:	Non-conjugated
Reactivity:	Human

Antibody Data

Isotype:	IgG
Uniprot:	B4DS77
Host Species:	Rabbit
Purification:	Antigen Affinity Purified
Immunogen:	Recombinant Human Protein shisa-9 protein (171-424AA)
Immunogen Species:	Homo sapiens (Human)

Manufacturers Statement: This final kit system is assembled and quality-released by Assay Genie Limited.

Buffer: Preservative: 0.03% Proclin 300 Constituents: 50% Glycerol, 0.01M PBS, pH 7.4

Form: Liquid

Preparation & Storage

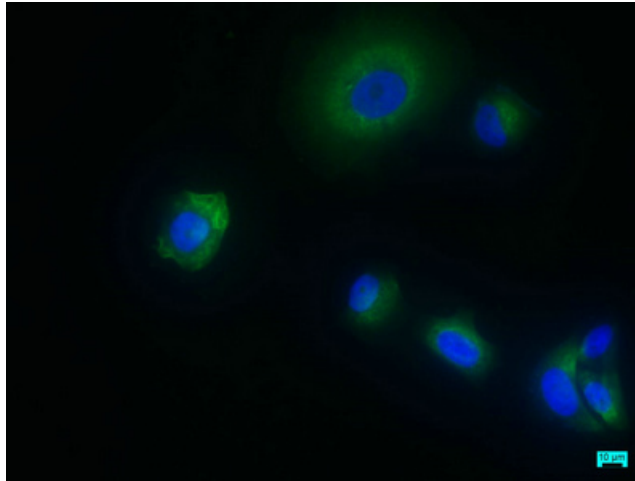
Storage: Upon receipt, store at -20°C or -80°C. Avoid repeated freeze.
Store Bradford Reagent at Room Temperature for 1 Year.

Recommended Dilutions:	Application	Recommended Dilution
	IF	1:50-1:200

Protein Quantification (Optional): To quantify total protein levels, use the Bradford Reagent included in this kit. Visit <https://www.assaygenie.com/bradford-protein-assay-protocol/> to view the full protocol

Validation Data

Image



Description

Immunofluorescence staining of MCF-7 cells with PACO63767 at 1:50, counter-stained with DAPI. The cells were fixed in 4% formaldehyde, permeabilized using 0.2% Triton X-100 and blocked in 10% normal Goat Serum. The cells were then incubated with the antibody overnight at 4°C. The secondary antibody was Alexa Fluor 488-conjugated AffiniPure Goat Anti-Rabbit IgG(H+L).