

PAP1 Antibody

PACO63775

Description

This PAP1 Antibody is supplied as a kit for advanced applications. The kit includes Bradford Reagent to quantify total protein concentration for accurate sample normalization (Optional).

Product Information

SKU:	PACO63775
Contents:	50µl Bradford Reagent: 1 vial (2ml)
Category:	-
Synonyms:	PAP1 antibody, FBN1a antibody, FIB1a antibody, PGL35 antibody, At4g04020 antibody, T24H24.16 antibody, Probable plastid-lipid-associated protein 1 antibody, chloroplastic antibody, AtPap1 antibody, Fibrillin-1a antibody, Plastoglobulin 35 antibody, AtPGL35 antibody
Clone:	Polyclonal
Applications:	ELISA WB
Conjugation:	Non-conjugated
Reactivity:	Arabidopsis thaliana

Antibody Data

Isotype:	IgG
Uniprot:	O81439
Host Species:	Rabbit
Purification:	>95%, Protein G purified
Immunogen:	Recombinant Arabidopsis thaliana Probable plastid-lipid-associated protein 1, chloroplastic protein (56-318AA)
Immunogen Species:	Arabidopsis thaliana (Mouse-ear cress)
Buffer:	Preservative: 0.03% Proclin 300 Constituents: 50% Glycerol, 0.01M PBS, pH 7.4
Form:	Liquid

Manufacturers Statement: This final kit system is assembled and quality-released by Assay Genie Limited.

Preparation & Storage

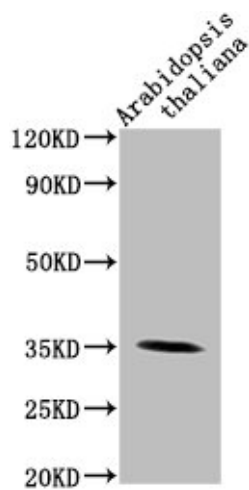
Storage: Upon receipt, store at -20°C or -80°C. Avoid repeated freeze.
Store Bradford Reagent at Room Temperature for 1 Year.

Recommended Dilutions:	Application	Recommended Dilution
	WB	1:1000-1:5000

Protein Quantification (Optional): To quantify total protein levels, use the Bradford Reagent included in this kit. Visit <https://www.assaygenie.com/bradford-protein-assay-protocol/> to view the full protocol

Validation Data

Image



Description

Western Blot Positive WB detected in: Arabidopsis thaliana lysate All lanes: PAP1 antibody at 1:2000 Secondary Goat polyclonal to rabbit IgG at 1/50000 dilution Predicted band size: 35 kDa Observed band size: 35 kDa