

## LRIT1 Antibody

PACO63899

### Description

---

This LRIT1 Antibody is supplied as a kit for advanced applications. The kit includes Bradford Reagent to quantify total protein concentration for accurate sample normalization (Optional).

### Product Information

---

<b>SKU:</b>	PACO63899
<b>Contents:</b>	50µl Bradford Reagent: 1 vial (2ml)
<b>Category:</b>	-
<b>Synonyms:</b>	LRIT1 antibody, LRRC21 antibody, PAL antibody, Leucine-rich repeat antibody, immunoglobulin-like domain and transmembrane domain-containing protein 1 antibody, Leucine-rich repeat-containing protein 21 antibody, Photoreceptor-associated LRR superfamily protein antibody, Retina-specific protein PAL antibody
<b>Clone:</b>	Polyclonal
<b>Applications:</b>	<b>ELISA</b> <b>WB</b>
<b>Conjugation:</b>	Non-conjugated
<b>Reactivity:</b>	Human

### Antibody Data

---

<b>Isotype:</b>	IgG
<b>Uniprot:</b>	Q9P2V4
<b>Host Species:</b>	Rabbit
<b>Purification:</b>	>95%, Protein G purified
<b>Immunogen:</b>	Recombinant Human Leucine-rich repeat, immunoglobulin-like domain and transmembrane domain-containing protein 1 protein (251-456AA)
<b>Immunogen Species:</b>	Homo sapiens (Human)
<b>Buffer:</b>	Preservative: 0.03% Proclin 300 Constituents: 50% Glycerol, 0.01M PBS, pH 7.4
<b>Form:</b>	Liquid

**Manufacturers Statement:** This final kit system is assembled and quality-released by Assay Genie Limited.



## Preparation & Storage

---

**Storage:** Upon receipt, store at -20°C or -80°C. Avoid repeated freeze.  
Store Bradford Reagent at Room Temperature for 1 Year.

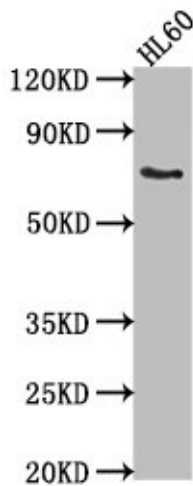
<b>Recommended Dilutions:</b>	<b>Application</b>	<b>Recommended Dilution</b>
	WB	1:1000-1:5000

**Protein Quantification (Optional):** To quantify total protein levels, use the Bradford Reagent included in this kit. Visit <https://www.assaygenie.com/bradford-protein-assay-protocol/> to view the full protocol

## Validation Data

---

### Image



### Description

Western Blot Positive WB detected in: HL60 whole cell lysate All lanes: LRIT1 antibody at 1:2000 Secondary Goat polyclonal to rabbit IgG at 1/50000 dilution Predicted band size: 69 kDa Observed band size: 69 kDa