

Ace2 Antibody

PACO64123

Description

This Ace2 Antibody is supplied as a kit for advanced applications. The kit includes Bradford Reagent to quantify total protein concentration for accurate sample normalization (Optional).

Product Information

SKU:	PACO64123
Contents:	50µl Bradford Reagent: 1 vial (2ml)
Category:	-
Synonyms:	Ace2Angiotensin-converting enzyme 2 antibody, EC 3.4.17.23 antibody, ACE-related carboxypeptidase) [Cleaved into: Processed angiotensin-converting enzyme 2] antibody
Clone:	Polyclonal
Applications:	ELISA WB
Conjugation:	Non-conjugated
Reactivity:	Rat

Antibody Data

Isotype:	IgG
Uniprot:	Q5EGZ1
Host Species:	Rabbit
Purification:	>95%, Antigen Affinity purified & Affinity purified
Immunogen:	Peptide sequence from Rat Ace2 protein (105-118AA)
Immunogen Species:	Rattus norvegicus (Rat)
Buffer:	Preservative: 0.03% Proclin 300 Constituents: 50% Glycerol, 0.01M PBS, PH 7.4
Form:	Liquid

Preparation & Storage

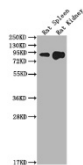
Storage: Upon receipt, store at -20°C or -80°C. Avoid repeated freeze.
Store Bradford Reagent at Room Temperature for 1 Year.

Recommended Dilutions:	Application	Recommended Dilution
	WB	1:1000-1:5000

Protein Quantification (Optional): To quantify total protein levels, use the Bradford Reagent included in this kit. Visit <https://www.assaygenie.com/bradford-protein-assay-protocol/> to view the full protocol

Validation Data

Image



Description

Western Blot Positive WB detected in: Rat Spleen tissue, Rat Kidney tissue All lanes: Ace2 antibody at 1:2000 Secondary Goat polyclonal to rabbit IgG at 1/50000 dilution Predicted band size: 93 kDa Observed band size: 93 kDa