

## Lcn2 Antibody

PACO64291

### Description

---

This Lcn2 Antibody is supplied as a kit for advanced applications. The kit includes Bradford Reagent to quantify total protein concentration for accurate sample normalization (Optional).

### Product Information

---

<b>SKU:</b>	PACO64291
<b>Contents:</b>	50µl Bradford Reagent: 1 vial (2ml)
<b>Category:</b>	-
<b>Synonyms:</b>	Lcn2 antibody, Neutrophil gelatinase-associated lipocalin antibody, NGAL antibody, Alpha-2-microglobulin-related protein antibody, Alpha-2U globulin-related protein antibody, Lipocalin 24p3 antibody, Lipocalin-2 antibody, Siderocalin LCN2 antibody, p25 antibody
<b>Clone:</b>	Polyclonal
<b>Applications:</b>	<b>ELISA</b> <b>IHC</b>
<b>Conjugation:</b>	Non-conjugated
<b>Reactivity:</b>	Rat

### Antibody Data

---

<b>Isotype:</b>	IgG
<b>Uniprot:</b>	P30152
<b>Host Species:</b>	Rabbit
<b>Purification:</b>	Antigen Affinity Purified
<b>Immunogen:</b>	Recombinant Rat Lcn2 protein (1-198AA)
<b>Immunogen Species:</b>	Rattus norvegicus (Rat)
<b>Buffer:</b>	Preservative: 0.03% Proclin 300 Constituents: 50% Glycerol, 0.01M PBS, PH 7.4
<b>Form:</b>	Liquid

**Manufacturers Statement:** This final kit system is assembled and quality-released by Assay Genie Limited.

## Preparation & Storage

---

**Storage:** Upon receipt, store at -20°C or -80°C. Avoid repeated freeze.  
Store Bradford Reagent at Room Temperature for 1 Year.

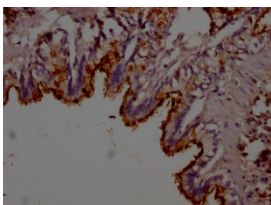
Recommended Dilutions:	Application	Recommended Dilution
	IHC	1:100-1:500

**Protein Quantification (Optional):** To quantify total protein levels, use the Bradford Reagent included in this kit. Visit <https://www.assaygenie.com/bradford-protein-assay-protocol/> to view the full protocol

## Validation Data

---

### Image



### Description

IHC image of PACO64291 diluted at 1:200 and staining in paraffin-embedded rat lung tissue performed on a Leica Bond<sup>TM</sup> system. After dewaxing and hydration, antigen retrieval was mediated by high pressure in a citrate buffer (pH 6.0). Section was blocked with 10% normal goat serum 30min at RT. Then primary antibody (1% BSA) was incubated at 4°C overnight. The primary is detected by a Goat anti-rabbit polymer IgG labeled by HRP and visualized using 0.05% DAB.