

Phospho-PAK4/PAK5/PAK6 (S474/S560/S602) Recombinant Antibody

RACO0131

Description

This Phospho-PAK4/PAK5/PAK6 (S474/S560/S602) Recombinant Antibody is supplied as a kit for advanced applications. The kit includes Bradford Reagent to quantify total protein concentration for accurate sample normalization (Optional).

Product Information

SKU:	RACO0131
Contents:	50µl Bradford Reagent: 1 vial (2ml)
Category:	-
Synonyms:	-
Clone:	Monoclonal
Applications:	ELISA WB IF
Conjugation:	Non-conjugated
Reactivity:	Human

Antibody Data

Isotype:	Rabbit IgG
Uniprot:	O96013 Q9P286 Q9NQU5
Host Species:	-
Purification:	Affinity-chromatography
Immunogen:	A synthesized peptide derived from Human Phospho-PAK4/PAK5/PAK6 (S474/S560/S602)
Immunogen Species:	Homo sapiens (Human)
Buffer:	Rabbit IgG in 10mM phosphate buffered saline , pH 7.4, 150mM sodium chloride, 0.05% BSA, 0.02% sodium azide and 50% glycerol.
Form:	Liquid

Manufacturers Statement: This final kit system is assembled and quality-released by Assay Genie Limited.

Preparation & Storage

Storage: Upon receipt, store at -20°C or -80°C. Avoid repeated freeze.

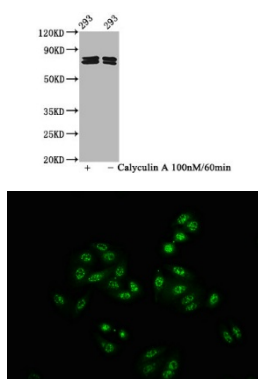
Store Bradford Reagent at Room Temperature for 1 Year.

Recommended Dilutions:	Application	Recommended Dilution
	WB	1:500-1:5000
	IF	1:20-1:200

Protein Quantification (Optional): To quantify total protein levels, use the Bradford Reagent included in this kit. Visit <https://www.assaygenie.com/bradford-protein-assay-protocol/> to view the full protocol

Validation Data

Image



Description

Western Blot Positive WB detected in 293 whole cell lysate(treated with Calyculin A or not) All lanes Phospho-PAK4/PAK5/PAK6 antibody at 2.15µg/ml Secondary Goat polyclonal to rabbit IgG at 1/50000 dilution Predicted band size: 64,75,80 KDa Observed band size: 75,80 KDa Immunofluorescence staining of HepG2 cells(treated with 50mM Calyculin A for 30min) with RACO0131 at 1:100,counter-stained with DAPI. The cells were fixed in 4% formaldehyde, permeabilized using 0.2% Triton X-100 and blocked in 10% normal Goat Serum. The cells were then incubated with the antibody overnight at 4°C. The secondary antibody was Alexa Fluor 488-conjugated AffiniPure Goat Anti-Rabbit IgG (H+L).