

## Biotinylated Recombinant Human CLEC2D Protein

RPCB0092

### Protein Information

---

<b>Size:</b>	100 µg	<b>Tag:</b>	N-hFc&Avi
<b>Reactivity:</b>	Human	<b>Expressed Host:</b>	-
<b>Calculated MW:</b>	59.1 kDa	<b>Observed MW:</b>	68-75 kDa

### Background

---

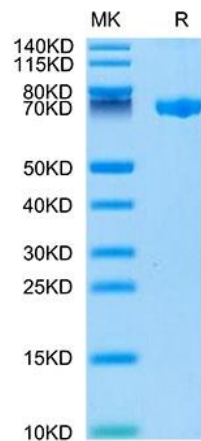
C-type lectin domain family 2, member D (CLEC2D) is implicated in the immune response. Pre-eclampsia and HIV infection have opposing immune responses. The contrasting expression of CLEC2D in HIV infection and pre-eclampsia is demonstrative of the immunosuppressive and pro-inflammatory roles of the respective pathologies.

### Properties

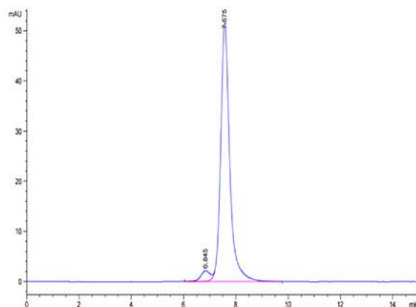
---

<b>Synonyms:</b>	LLT-1, CLAX, LLT1, OCIL, CLEC2D, CLAXLLT-1, OCILmember D
<b>Gene ID:</b>	29121
<b>Endotoxin:</b>	< 1 EU/µg of the protein by LAL method.
<b>Description:</b>	High quality, high purity and low endotoxin recombinant Biotinylated Recombinant Human CLEC2D Protein (RPCB0092), tested reactivity in HEK293 cells and has been validated in SDS-PAGE. 100% guaranteed.
<b>Purity:</b>	≥ 95 % as determined by Tris-Bis PAGE; ≥ 95 % as determined by HPLC.
<b>Storage:</b>	Store at -20°C. Store the lyophilized protein at -20°C to -80°C up to 1 year from the date of receipt. After reconstitution, the protein solution is stable at -20°C for 3 months, at 2-8°C for up to 1 week.

## Validation Data



Biotinylated Recombinant Human CLEC2D Protein was determined by Tris-Bis PAGE under reducing conditions.



The purity of Biotinylated Human CLEC2D is greater than 95% as determined by SEC-HPLC.