

Recombinant Human LH /CGA&LHB Protein

RPCB0119

Description

This high-purity Recombinant Human LH /CGA&LHB Protein is supplied as a kit for advanced applications. The kit includes Bradford Reagent to quantify total protein concentration for accurate sample normalization (Optional).

Protein Information

SKU:	RPCB0119
Contents:	10 µg, 20 µg, 50 µg Bradford Reagent: 1 vial (2ml)
Synonyms:	CGA&LHB, Lutropin alpha chain, &Lutropin beta chain, LSH-alpha&LSH-beta, Luteinizing Hormone alpha/beta Heterodimer
Species:	Human
Gene ID:	1081&3972
Expression Host:	-
Tags:	C-Avi&His
Calculated MW:	26.04 kDa
Observed MW:	40-45 kDa
Purification:	≥ 95 % as determined by SDS-PAGE.
Endotoxin:	< 0.1 EU/µg of the protein by LAL method.
Formulation:	Lyophilized from a 0.22 µm filtered solution of PBS, pH 7.4.
Bio- Activity:	-

Preparation & Storage

Shipping: The product is shipped at ambient temperature. Upon receipt, store it immediately at the temperature recommended below.

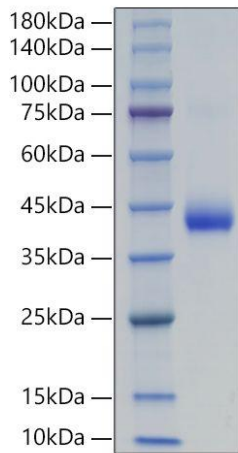
Storage: Store at -20°C. Store the lyophilized protein at -20°C to -80°C up to 1 year from the date of receipt. After reconstitution, the protein solution is stable at -20°C for 3 months, at 2-8°C for up to 1 week.
Store Bradford Reagent at Room Temperature for 1 Year.

Reconstitution: Centrifuge the vial before opening. Reconstitute to a concentration of 0.1-0.5 mg/mL in sterile distilled water. Avoid vortex or vigorously pipetting the protein. For long term storage, it is recommended to add a carrier protein or stabilizer (e.g. 0.1% BSA, 5% HSA, 10% FBS or 5% Trehalose), and aliquot the reconstituted protein solution to minimize free-thaw cycles.

Protein Quantification (Optional): To quantify total protein levels, use the Bradford Reagent included in this kit. Visit <https://www.assaygenie.com/bradford-protein-assay-protocol/> to view the full protocol.

Validation Data

Image



Description

Recombinant Human LH /CGA&LHB Protein was determined by SDS-PAGE under reducing conditions with Coomassie Blue.