

Recombinant Human PD-1/PDCD1/CD279 Protein

RPCB0270

Protein Information

Size:	10 µg , 20 µg , 50 µg , 100 µg	Tag:	C-His
Reactivity:	Human	Expressed Host:	-
Calculated MW:	16.89 kDa	Observed MW:	30-40 kDa

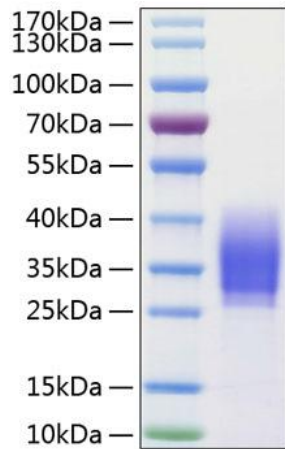
Background

This protein is a cell surface membrane protein of the immunoglobulin superfamily. This protein is expressed in pro-B-cells and is thought to play a role in their differentiation. In mice, expression of this gene is induced in the thymus when anti-CD3 antibodies are injected and large numbers of thymocytes undergo apoptosis. Mice deficient for this gene bred on a BALB/c background developed dilated cardiomyopathy and died from congestive heart failure.

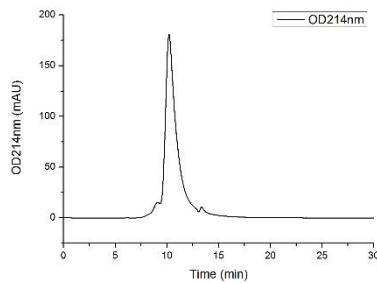
Properties

Synonyms:	PDCD1, CD279, PD-1, PD1, SLEB2, hPD-1, hPD-l, hSLE1, programmed cell death 1, PD-1, CD279, PD1, SLEB2, hPD-1, hPD-l, hSLE1, PD-1/CD279
Gene ID:	5133
Endotoxin:	< 0.1 EU/µg of the protein by LAL method.
Description:	High quality, high purity and low endotoxin recombinant Recombinant Human PD-1/PDCD1/CD279 Protein (RPCB0270), tested reactivity in HEK293 cells and has been validated in SDS-PAGE. 100% guaranteed.
Purity:	≥ 95 % as determined by SDS-PAGE; ≥ 90 % as determined by HPLC.
Storage:	Store at -20°C. Store the lyophilized protein at -20°C to -80 °C up to 1 year from the date of receipt. After reconstitution, the protein solution is stable at -20°C for 3 months, at 2-8°C for up to 1 week.

Validation Data



Recombinant Human PD-1/PDCD1/CD279
Protein was determined by SDS-PAGE under reducing conditions with Coomassie Blue.



The purity of Human PD-1 Protein (RPCB0270) was greater than 90% as determined by SEC-HPLC.