

## Recombinant Human IL-17A/CTLA-8 Protein

RPCB0271

### Description

---

This high-purity Recombinant Human IL-17A/CTLA-8 Protein is supplied as a kit for advanced applications. The kit includes Bradford Reagent to quantify total protein concentration for accurate sample normalization (Optional).

### Protein Information

---

<b>SKU:</b>	RPCB0271
<b>Contents:</b>	10 µg, 20 µg, 50 µg, 100 µg Bradford Reagent: 1 vial (2ml)
<b>Synonyms:</b>	IL17A, CTLA-8, CTLA8, IL-17, IL-17A, IL17, interleukin-17A, CTLA-8, CTLA8, IL-17, IL-17A, IL17
<b>Species:</b>	Human
<b>Gene ID:</b>	3605
<b>Expression Host:</b>	HEK293 cells
<b>Tags:</b>	C-His
<b>Calculated MW:</b>	16.37 kDa
<b>Observed MW:</b>	18-25 kDa
<b>Purification:</b>	≥ 95 % as determined by SDS-PAGE.
<b>Endotoxin:</b>	< 0.1 EU/µg of the protein by LAL method.
<b>Formulation:</b>	Lyophilized from a 0.22 µm filtered solution of PBS, pH 7.4. Contact us for customized product form or formulation.
<b>Bio- Activity:</b>	1. Measured by its binding ability in a functional ELISA. Immobilized Recombinant human IL17RA at 2 µg/mL (100 µL/well) can bind Recombinant human IL-17A, the EC 50 of human IL-17A is 32.5-130 ng/mL.

**Manufacturers Statement - This final kit system is assembled and quality-released by Assay Genie Limited**

2. Measured by its ability to induce IL-6 secretion by Hela cells. The ED 50 for this effect is 2.64-10.58 ng/mL, corresponding to a specific activity of  $9.45 \times 10^4 \sim 3.79 \times 10^5$  units/mg.

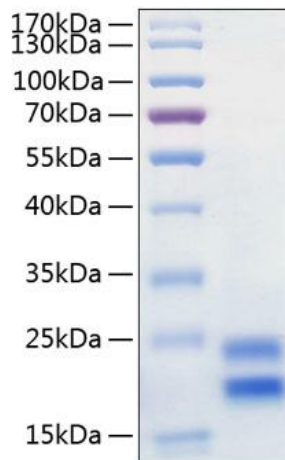
## Preparation & Storage

---

- Shipping:** The product is shipped at ambient temperature. Upon receipt, store it immediately at the temperature recommended below.
- Storage:** Store at -20°C. Store the lyophilized protein at -20°C to -80 °C up to 1 year from the date of receipt. After reconstitution, the protein solution is stable at -20°C for 3 months, at 2-8°C for up to 1 week.  
Store Bradford Reagent at Room Temperature for 1 Year.
- Reconstitution:** Centrifuge the vial before opening. Reconstitute to a concentration of 0.1-0.5 mg/mL in sterile distilled water. Avoid vortex or vigorously pipetting the protein. For long term storage, it is recommended to add a carrier protein or stabilizer (e.g. 0.1% BSA, 5% HSA, 10% FBS or 5% Trehalose), and aliquot the reconstituted protein solution to minimize free-thaw cycles.
- Protein Quantification (Optional):** To quantify total protein levels, use the Bradford Reagent included in this kit. Visit <https://www.assaygenie.com/bradford-protein-assay-protocol/> to view the full protocol.

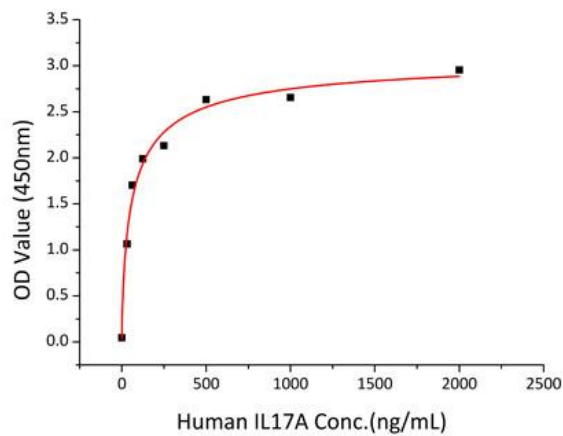
## Validation Data

### Image



### Description

Recombinant Human IL-17A/CTLA-8 Protein was determined by SDS-PAGE under reducing conditions with Coomassie Blue.



Immobilized Recombinant human IL17RA, His Tag at 2  $\mu\text{g/mL}$  (100  $\mu\text{L/well}$ ) can bind Recombinant human IL-17A, The  $\text{EC}_{50}$  of human IL-17A is 32.5-130 ng/mL.