

## Recombinant Human CD301 Protein

RPCB0321

### Protein Information

---

<b>Size:</b>	10 µg , 20 µg , 50 µg	<b>Tag:</b>	C-His
<b>Reactivity:</b>	Human	<b>Expressed Host:</b>	HEK293 cells
<b>Calculated MW:</b>	29.61 kDa	<b>Observed MW:</b>	38-45 kDa

### Background

---

CLEC10A, also known as macrophage galactose/N-acetyl-galactosamine (GalNAc) specific lectin (MGL), CD301, DC-ASGPR, and HML, is a 40 kDa type II transmembrane glycoprotein that belongs to the C-type lectin family. C-type lectin family share a common protein fold and have diverse functions, such as cell adhesion, cell-cell signalling, glycoprotein turnover, and roles in inflammation and immune response. CLEC10A is expressed on macrophages and related cells of myeloid origins, particularly immature dendritic cells (DCs). CLEC10A plays a protective role against colitis by effectively inducing IL-10 production by colonic lamina propria macrophages in response to invading commensal bacteria.

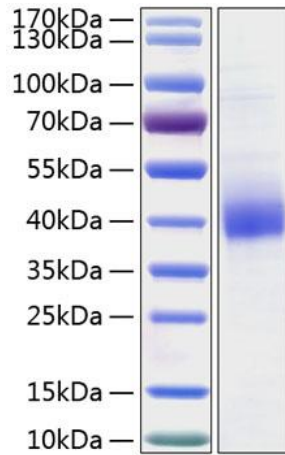
### Properties

---

<b>Synonyms:</b>	CLEC10A, CD301, CLECSF13, CLECSF14, HML, HML2, MGL
<b>Gene ID:</b>	10462
<b>Endotoxin:</b>	< 1 EU/µg of the protein by LAL method.
<b>Description:</b>	High quality, high purity and low endotoxin recombinant Recombinant Human CD301 Protein (RPCB0321), tested reactivity in HEK293 cells and has been validated in SDS-PAGE. 100% guaranteed.
<b>Purity:</b>	≥ 90 % as determined by SDS-PAGE.
<b>Storage:</b>	Store at -20°C. Store the lyophilized protein at -20°C to -80 °C up to 1 year from the date of receipt. After reconstitution, the protein solution is stable at -20°C for 3 months, at 2-8°C for up to 1 week.

## Validation Data

---



Recombinant Human CD301 Protein was determined by SDS-PAGE under reducing conditions with Coomassie Blue.