

## Recombinant Human CD3E&CD3G Protein

RPCB0569

### Protein Information

---

<b>Size:</b>	100 µg	<b>Tag:</b>	C-His
<b>Reactivity:</b>	Human	<b>Expressed Host:</b>	HEK293 cells
<b>Calculated MW:</b>	17.9 kDa (CD3E), 17.9 kDa (CD3G)	<b>Observed MW:</b>	25-40 kDa

### Background

---

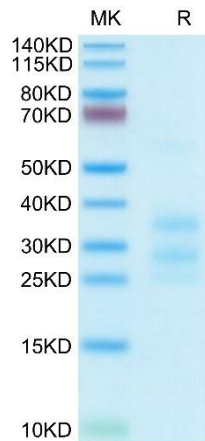
T-cell surface glycoprotein CD3 epsilon & CD3 gamma chain, also known as CD3E & CD3G, are single-pass type I membrane proteins. When antigen presenting cells (APCs) activate T-cell receptor (TCR), TCR-mediated signals are transmitted across the cell membrane by the CD3 chains CD3D, CD3E, CD3G and CD3Z. All CD3 chains contain immunoreceptor tyrosine-based activation motifs (ITAMs) in their cytoplasmic domain.

### Properties

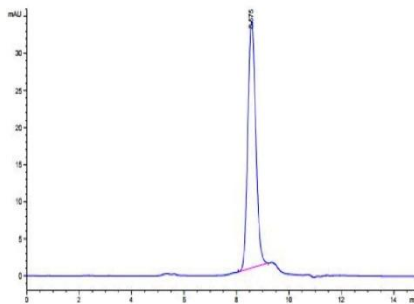
---

<b>Synonyms:</b>	CD3, CD3G, CD3g, T3G, CD3e, CD3E, CD3 epsilon&CD3 gamma, CD3E&CD3G
<b>Gene ID:</b>	916&917
<b>Endotoxin:</b>	< 1 EU/µg of the protein by LAL method.
<b>Description:</b>	High quality, high purity and low endotoxin recombinant Recombinant Human CD3E&CD3G Protein (RPCB0569), tested reactivity in HEK293 cells and has been validated in SDS-PAGE. 100% guaranteed.
<b>Purity:</b>	≥ 95 % as determined by SDS-PAGE; ≥ 95 % as determined by HPLC.
<b>Storage:</b>	Store at -20°C. Store the lyophilized protein at -20°C to -80 °C up to 1 year from the date of receipt. After reconstitution, the protein solution is stable at -20°C for 3 months, at 2-8°C for up to 1 week.

## Validation Data

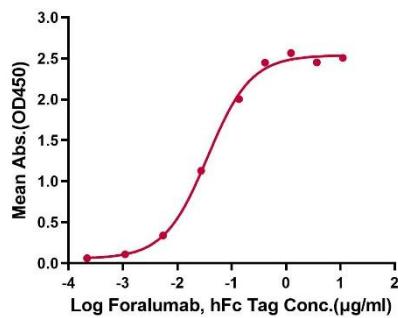


Recombinant Human CD3E&CD3G Protein was determined by Tris-Bis PAGE under reducing conditions.

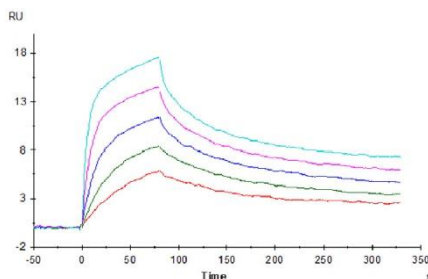


The purity of Human CD3E&CD3G is greater than 95% as determined by SEC-HPLC.

**Human CD3E&CD3G, His Tag ELISA**  
0.2µg Human CD3E&CD3G, His Tag Per Well



Immobilized Human CD3E&CD3G, His Tag at 2 µg/mL (100 µL/Well) on the plate. Dose response curve for Foralumab, hFc Tag with the EC50 of 36.2ng/mL determined by ELISA.



Human CD3E&CD3G, His Tag captured on CM5 Chip via Anti-His Antibody can bind OKT3, mFc Tag with an affinity constant of 0.22nM as determined in SPR assay (Biacore T200).