

Recombinant Mouse Apolipoprotein E/APOE Protein

RPCB0665

Protein Information

Size:	10 µg , 20 µg , 50 µg , 100 µg	Tag:	C-His
Reactivity:	Mouse	Expressed Host:	HEK293 cells
Calculated MW:	34.81 kDa	Observed MW:	35-45 kDa

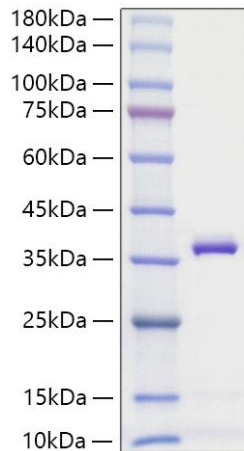
Background

Apolipoprotein E (Apo-E), is a member of the apolipoprotein A1/A4/E family. ApoE is a major protein component of serum LDL, VLDL, HDL, and chylomicrons. APOE may function in mediating the binding, internalization, and catabolism of lipoprotein particles. It can serve as a ligand for the LDL (apo B/E) receptor and for the specific apo-E receptor (chylomicron remnant) of hepatic tissues. APOE is usually secreted in plasma. Phosphorylation sites are present in the extracellular medium.

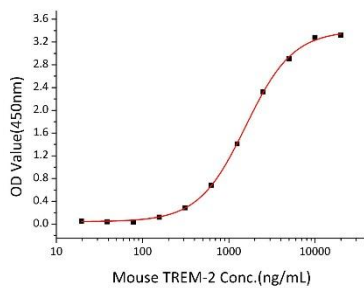
Properties

Synonyms:	APOE, AD2, APO-E, ApoE4, LDLQC5, LPG, AI255918, Apo-E, Apoe
Gene ID:	11816
Endotoxin:	< 1 EU/µg of the protein by LAL method.
Description:	High quality, high purity and low endotoxin recombinant Recombinant Mouse Apolipoprotein E/APOE Protein (RPCB0665), tested reactivity in HEK293 cells and has been validated in SDS-PAGE. 100% guaranteed.
Purity:	≥ 95 % as determined by SDS-PAGE.
Storage:	Store at -20°C. Store the lyophilized protein at -20°C to -80 °C up to 1 year from the date of receipt. After reconstitution, the protein solution is stable at -20°C for 3 months, at 2-8°C for up to 1 week.

Validation Data



Recombinant Mouse Apolipoprotein E/APOE Protein was determined by SDS-PAGE under reducing conditions with Coomassie Blue.



Immobilized Mouse APOE(RPCB0665) at 5µg/mL (100 µL/well) can bind Mouse TREM2(RPCB1621) with a linear range of 0.16-1.5µg/mL.