

Recombinant Human Insulin-like 3/INSL3 Protein

RPCB0834

Protein Information

Size:	10 µg , 50 µg	Tag:	C-6×His
Reactivity:	Human	Expressed Host:	HEK293 cells
Calculated MW:	13.4 kDa	Observed MW:	13-25 kDa

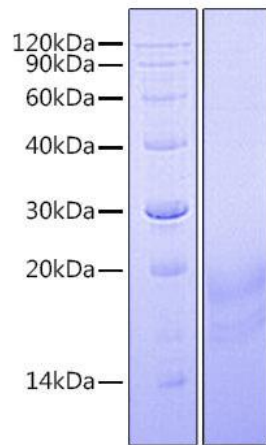
Background

-

Properties

Synonyms:	INSL3, RLF, RLNL, ley-I-L
Gene ID:	3640
Endotoxin:	< 1 EU/µg of the protein by LAL method.
Description:	High quality, high purity and low endotoxin recombinant Recombinant Human Insulin-like 3/INSL3 Protein (RPCB0834), tested reactivity in HEK293 cells and has been validated in SDS-PAGE. 100% guaranteed.
Purity:	≥ 95 % as determined by SDS-PAGE.
Storage:	Store at -20°C. Store the lyophilized protein at -20°C to -80 °C up to 1 year from the date of receipt. After reconstitution, the protein solution is stable at -20°C for 3 months, at 2-8°C for up to 1 week.

Validation Data



Recombinant Human Insulin-like 3/INSL3
Protein was determined by SDS-PAGE under
reducing conditions with Coomassie Blue.