

Recombinant Human CCL21 Protein

RPCB0921

Protein Information

Size:	10 µg , 20 µg , 50 µg	Tag:	No tag
Reactivity:	Human	Expressed Host:	E. coli
Calculated MW:	12.25 kDa	Observed MW:	16-17 kDa

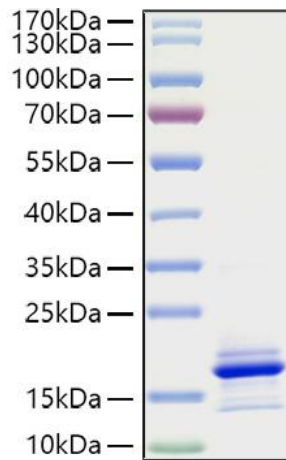
Background

Chemokines are a family of small chemotactic cytokines, or proteins secreted by cells. Chemokines share the same structure similarities such as small size, and the presence of four cysteine residues in conserved locations in order to form their 3-dimensional shape. Some of the chemokines are considered pro-inflammatory which can be induced to recruit cells of the immune system to a site of infection during an immune response, while others are considered homeostatic and are implied in controlling the migration of cells during normal processes of tissue maintenance and development. There are four members of the chemokine family: C-C chemokines, C chemokines, CXC chemokines and CX3C chemokines. The C-C chemokines have two cysteines nearby the amino terminus. There have been at least 27 distinct members of this subgroup reported for mammals, called C-C chemokine ligands-1 to 28. Chemokine ligand 21(CCL21), also known as 6CKine, exodus-2, and secondary lymphoid-tissue chemokine(SLC), is a small cytokine belonging to the C-C chemokine family. CCL21 takes its name 6CKine for its constitutively six conserved cysteine residues but not four cysteines typical to chemokines. CCL21 has function in inducing vigorous calcium migrations and chemotactic responses.

Properties

Synonyms:	CCL21, 6CKine, CKb9, ECL, SCYA21, SLC, TCA4
Gene ID:	6366
Endotoxin:	Please contact us for more information.
Description:	High quality, high purity and low endotoxin recombinant Recombinant Human CCL21 Protein (RPCB0921), tested reactivity in E. coli and has been validated in SDS-PAGE. 100% guaranteed.
Purity:	≥ 85 % as determined by SDS-PAGE.
Storage:	Store at -20°C. Store the lyophilized protein at -20°C to -80 °C up to 1 year from the date of receipt. After reconstitution, the protein solution is stable at -20°C for 3 months, at 2-8°C for up to 1 week.

Validation Data



Recombinant Human CCL21 Protein was determined by SDS-PAGE under reducing conditions with Coomassie Blue.