

## Recombinant Human CCL1/I-309 Protein

RPCB1021

### Protein Information

---

<b>Size:</b>	10 µg , 20 µg , 50 µg	<b>Tag:</b>	No tag
<b>Reactivity:</b>	Human	<b>Expressed Host:</b>	Pichia
<b>Calculated MW:</b>	8.49 kDa	<b>Observed MW:</b>	10-18 kDa

### Background

---

CCL1 or chemokine (C-C motif) ligand 1, also known as I-309 or TCA-3, is a member of the chemokine (C-C motif) ligand family. The C-C chemokines have two cysteines nearby the amino terminus. There have been at least 27 distinct members of this subgroup reported for mammals, called C-C chemokine ligands (CCL)-1 to 28. I-309/CCL1/TCA-3 interacts with the G protein-linked transmembrane chemokine receptors CCR8 and induces biochemical events that may result in the control of chemotaxis, proliferation, apoptosis and adhesion. It has been demonstrated that I-309/CCL1/TCA-3 displays chemotactic activity for monocytes and other cell types such as NK cells and dendritic cells, but not for neutrophils. Furthermore, as the only known physiological ligand for CCR8, I-309/CCL1/TCA-3 was identified as a potent inhibitor of HIV-1 envelope-mediated cell-cell fusion and virus infection. I-309/CCL1/TCA-3 induces significant levels of LTC<sub>4</sub> from elicited eosinophils.

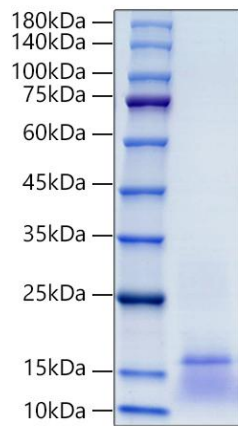
### Properties

---

<b>Synonyms:</b>	CCL1, I-309, P500, SCYA1, SISE, TCA3
<b>Gene ID:</b>	6346
<b>Endotoxin:</b>	< 0.1 EU/µg of the protein by LAL method.
<b>Description:</b>	High quality, high purity and low endotoxin recombinant Recombinant Human CCL1/I-309 Protein (RPCB1021), tested reactivity in Pichia and has been validated in SDS-PAGE. 100% guaranteed.
<b>Purity:</b>	≥ 95 % as determined by SDS-PAGE.
<b>Storage:</b>	Store at -20°C. Store the lyophilized protein at -20°C to -80 °C up to 1 year from the date of receipt. After reconstitution, the protein solution is stable at -20°C for 3 months, at 2-8°C for up to 1 week.

## Validation Data

---



Recombinant Human CCL1/I-309 Protein was determined by SDS-PAGE under reducing conditions with Coomassie Blue.