

Recombinant Mouse SLAMF2/CD48 Protein

RPCB1071

Protein Information

Size:	10 µg , 20 µg , 50 µg , 100 µg	Tag:	C-His
Reactivity:	Mouse	Expressed Host:	HEK293 cells
Calculated MW:	23.13 kDa	Observed MW:	38-50 kDa

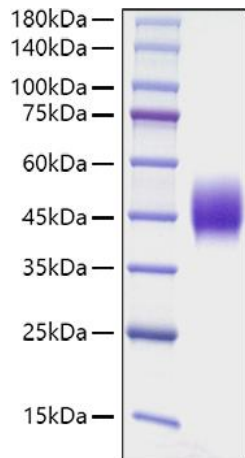
Background

This protein is a member of the CD2 subfamily of immunoglobulin-like receptors which includes SLAM (signaling lymphocyte activation molecules) proteins. The encoded protein is found on the surface of lymphocytes and other immune cells, dendritic cells and endothelial cells, and participates in activation and differentiation pathways in these cells. The encoded protein does not have a transmembrane domain, however, but is held at the cell surface by a GPI anchor via a C-terminal domain which maybe cleaved to yield a soluble form of the receptor. Multiple transcript variants encoding different isoforms have been found for this gene.

Properties

Synonyms:	BCM1, BLAST, BLAST1, hCD48, mCD48, MEM-102, SLAMF2, CD48
Gene ID:	12506
Endotoxin:	< 0.1 EU/µg of the protein by LAL method.
Description:	High quality, high purity and low endotoxin recombinant Recombinant Mouse SLAMF2/CD48 Protein (RPCB1071), tested reactivity in HEK293 cells and has been validated in SDS-PAGE. 100% guaranteed.
Purity:	≥ 95 % as determined by SDS-PAGE.
Storage:	Store at -20°C. Store the lyophilized protein at -20°C to -80 °C up to 1 year from the date of receipt. After reconstitution, the protein solution is stable at -20°C for 3 months, at 2-8°C for up to 1 week.

Validation Data



Recombinant Mouse SLAMF2/CD48 Protein was determined by SDS-PAGE under reducing conditions with Coomassie Blue.