

Recombinant human IL-25/IL-17E Protein

RPCB1160

Protein Information

Size:	10 µg , 20 µg , 50 µg	Tag:	C-6His
Reactivity:	human	Expressed Host:	HEK293 cells
Calculated MW:	17.58 kDa	Observed MW:	20-28 kDa

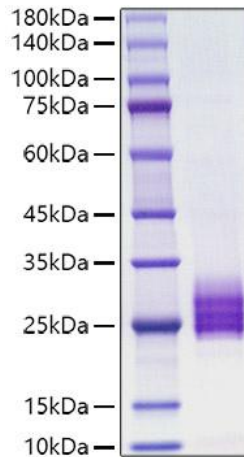
Background

Interleukin-25 (IL-25) is a cytokine that shares sequence similarity with interleukin 17. This cytokine can induce NF-kappaB activation, and stimulate the production of interleukin 8. Both this cytokine and interleukin 17B are ligands for the cytokine receptor IL17BR. IL-25 is a member of the IL-17 family of cytokines. However, unlike the other members of this family, IL-25 promotes T helper (Th) 2 responses. IL-25 also regulates the development of autoimmune inflammation mediated by IL-17-producing T cells. IL-25 and IL-17, being members of the same cytokine family, play opposing roles in the pathogenesis of organ-specific autoimmunity. IL-25 promotes cell expansion and Th2 cytokine production when Th2 central memory cells are stimulated with thymic stromal lymphopoietin (TSLP)-activated dendritic cells (DCs), homeostatic cytokines, or T cell receptor for antigen triggering. Elevated expression of IL-25 and IL-25R transcripts was observed in asthmatic lung tissues and atopic dermatitis skin lesions, linking their possible roles with exacerbated allergic disorders. A plausible explanation that IL-25 produced by innate effector eosinophils and basophils may augment the allergic inflammation by enhancing the maintenance and functions of adaptive Th2 memory cells had been provided.

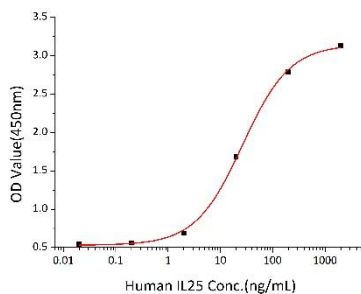
Properties

Synonyms:	IL17E, IL-25
Gene ID:	64806
Endotoxin:	< 0.1 EU/µg of the protein by LAL method.
Description:	High quality, high purity and low endotoxin recombinant Recombinant human IL-25/IL-17E Protein (RPCB1160), tested reactivity in HEK293 cells and has been validated in SDS-PAGE. 100% guaranteed.
Purity:	≥ 95 % as determined by SDS-PAGE.
Storage:	Store at -20°C. Store the lyophilized protein at -20°C to -80 °C up to 1 year from the date of receipt. After reconstitution, the protein solution is stable at -20°C for 3 months, at 2-8°C for up to 1 week.

Validation Data



Recombinant human IL-25/IL-17E Protein was determined by SDS-PAGE under reducing conditions with Coomassie Blue.



Recombinant human IL-25 induce CXCL1/GRO alpha secretion in HT-29 human colon adenocarcinoma cells. The ED50 for this effect is 13.32-53.24 ng/mL, corresponding to a specific activity of $1.88 \times 10^4 \sim 7.51 \times 10^4$ units/mg.