

## Recombinant Mouse IL-1 beta Protein

RPCB1216

### Description

---

This high-purity Recombinant Mouse IL-1 beta Protein is supplied as a kit for advanced applications. The kit includes Bradford Reagent to quantify total protein concentration for accurate sample normalization (Optional).

### Protein Information

---

<b>SKU:</b>	RPCB1216
<b>Contents:</b>	10 µg, 20 µg, 50 µg, 100 µg Bradford Reagent: 1 vial (2ml)
<b>Synonyms:</b>	IL-1 beta, IL-, Il-1b, IL-1beta, Il1b
<b>Species:</b>	Mouse
<b>Gene ID:</b>	16176
<b>Expression Host:</b>	E. coli
<b>Tags:</b>	C-His
<b>Calculated MW:</b>	18.23 kDa
<b>Observed MW:</b>	19-20 kDa
<b>Purification:</b>	≥ 95 % as determined by SDS-PAGE.
<b>Endotoxin:</b>	< 0.1 EU/µg of the protein by LAL method.
<b>Formulation:</b>	Lyophilized from a 0.22 µm filtered solution of PBS, pH 7.4.
<b>Bio- Activity:</b>	1. Measured by its binding ability in a functional ELISA. Immobilized Mouse IL1B at 10 µg/mL (100 µL/well) can bind Human IL1R2 with a linear range of 0.03125-0.8036 µg/mL.

**Manufacturers Statement - This final kit system is assembled and quality-released by Assay Genie Limited**

2. Measured in a cell proliferation assay using D10.G4.1 mouse helper T cells. The ED 50 for this effect is 42.1-168.4 pg/mL, corresponding to a specific activity of  $5.94 \times 10^{-6}$  -  $2.37 \times 10^{-7}$  units/mg.

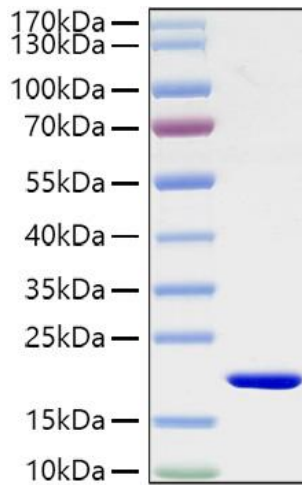
## Preparation & Storage

---

- Shipping:** The product is shipped at ambient temperature. Upon receipt, store it immediately at the temperature recommended below.
- Storage:** Store at -20°C. Store the lyophilized protein at -20°C to -80 °C up to 1 year from the date of receipt. After reconstitution, the protein solution is stable at -20°C for 3 months, at 2-8°C for up to 1 week. Store Bradford Reagent at Room Temperature for 1 Year.
- Reconstitution:** Centrifuge the vial before opening. Reconstitute to a concentration of 0.1-0.5 mg/mL in sterile distilled water. Avoid vortex or vigorously pipetting the protein. For long term storage, it is recommended to add a carrier protein or stabilizer (e.g. 0.1% BSA, 5% HSA, 10% FBS or 5% Trehalose), and aliquot the reconstituted protein solution to minimize free-thaw cycles.
- Protein Quantification (Optional):** To quantify total protein levels, use the Bradford Reagent included in this kit. Visit <https://www.assaygenie.com/bradford-protein-assay-protocol/> to view the full protocol.

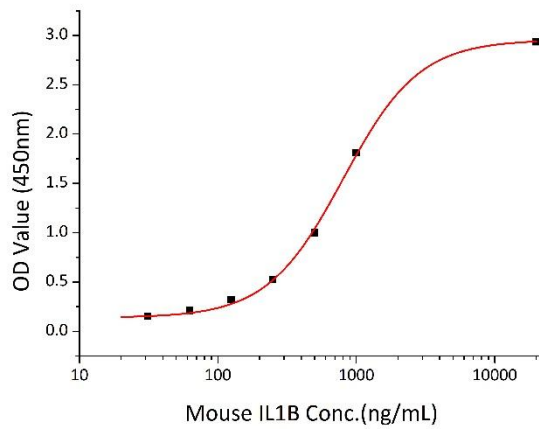
## Validation Data

### Image



### Description

Recombinant Mouse IL-1 beta Protein was determined by SDS-PAGE under reducing conditions with Coomassie Blue.



Immobilized Mouse IL1B at 10 µg/mL (100 µL/well) can bind Human IL1R2 with a linear range of 0.03125-0.8036 µg/mL.