

Recombinant Human Chorionic somatomammotropin hormone

1/Choriomammotropin/CSH1 Protein

RPCB1243

Protein Information

Size:	10 µg , 20 µg , 50 µg , 100 µg	Tag:	C-6His
Reactivity:	Human	Expressed Host:	HEK293 cells
Calculated MW:	23.15 kDa	Observed MW:	25 kDa

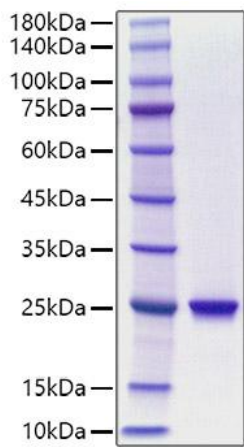
Background

Chorionic somatomammotropin hormone, also known as Choriomammotropin, Lactogen, Placental lactogen and CSH1, is a secreted protein which belongs to the somatotropin / prolactin family. CSH1 is produced only during pregnancy and is involved in stimulating lactation, fetal growth and metabolism. Does not interact with GHR but only activates PRLR through zinc-induced dimerization. The CSH1 gene is member of the GH gene cluster on 17q, which consists of two growth hormone genes and three CSH genes. Genomic alterations in the GH cluster are well known, causing different phenotypes depending on the size of the deletion and the genes involved. The increased prevalence of hemizygosity of CSH1 in population in comparison to controls indicates a role for CSH1 haploinsufficiency in the etiology of growth retardation. Investigation of CSH1 deletions in further SRS and growth retarded patients will enable us to establish under which circumstances haploinsufficiency of CSH1 is likely to result in clinical changes.

Properties

Synonyms:	PL, CSA, CS-1, CSMT, GHB3, hCS-1, hCS-A
Gene ID:	1442
Endotoxin:	< 0.1 EU/µg of the protein by LAL method.
Description:	High quality, high purity and low endotoxin recombinant Recombinant Human Chorionic somatomammotropin hormone 1/Choriomammotropin/CSH1 Protein (RPCB1243), tested reactivity in HEK293 cells and has been validated in SDS-PAGE. 100% guaranteed.
Purity:	≥ 95 % as determined by SDS-PAGE.
Storage:	Store at -20°C. Store the lyophilized protein at -20°C to -80 °C up to 1 year from the date of receipt. After reconstitution, the protein solution is stable at -20°C for 3 months, at 2-8°C for up to 1 week.

Validation Data



Recombinant Human Chorionic somatomammotropin hormone 1/Choriomammotropin/CSH1 Protein was determined by SDS-PAGE under reducing conditions with Coomassie Blue.