

Recombinant Human LILRA1/LIR-6/CD85i Protein

RPCB1293

Protein Information

Size:	10 µg , 20 µg , 50 µg , 100 µg	Tag:	C-His&Avi
Reactivity:	Human	Expressed Host:	HEK293 cells
Calculated MW:	51.18 kDa	Observed MW:	70-90 kDa

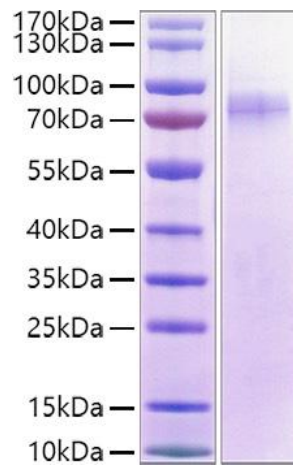
Background

Leukocyte immunoglobulin-like receptors (LILRs) are inhibitory, stimulatory or soluble receptors encoded within the leukocyte receptor complex. Some LILRs are extensively polymorphic, and exhibit evidence for balancing selection and association with disease susceptibility. LILRA1 (LIR-6) can recognize MHC (major histocompatibility complex) class I or class I-like molecules, and high levels of sequence similarity among LILRA1, LILRA2 (ILT1), LILRA3 (ILT6) and LILRB1/B2.

Properties

Synonyms:	LILRA1, CD85I, LIR-6, LIR6
Gene ID:	11024
Endotoxin:	< 1 EU/µg of the protein by LAL method.
Description:	High quality, high purity and low endotoxin recombinant Recombinant Human LILRA1/LIR-6/CD85i Protein (RPCB1293), tested reactivity in HEK293 cells and has been validated in SDS-PAGE. 100% guaranteed.
Purity:	≥ 90 % as determined by SDS-PAGE.
Storage:	Store at -20°C. Store the lyophilized protein at -20°C to -80 °C up to 1 year from the date of receipt. After reconstitution, the protein solution is stable at -20°C for 3 months, at 2-8°C for up to 1 week.

Validation Data



Recombinant Human LILRA1/LIR-6/CD85i
Protein was determined by SDS-PAGE under reducing conditions with Coomassie Blue.