

Recombinant Cynomolgus CD3 epsilon/CD3E Protein

RPCB1307

Protein Information

Size:	100 µg	Tag:	C-His
Reactivity:	Cynomolgus	Expressed Host:	HEK293 cells
Calculated MW:	11.7 kDa	Observed MW:	14-16 kDa

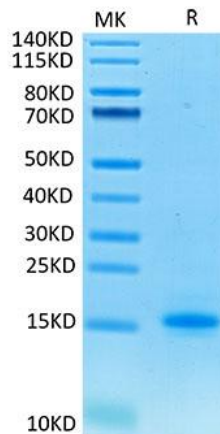
Background

CD3E, is a single-pass type I membrane protein. CD3 (cluster of differentiation 3) T cell co-receptor helps to activate both the cytotoxic T cell (CD8+ naive T cells) and also T helper cells (CD4+ naive T cells). It consists of a protein complex and is composed of four distinct chains. In mammals, the complex contains a CD3γ chain, a CD3δ chain, and two CD3ε chains.

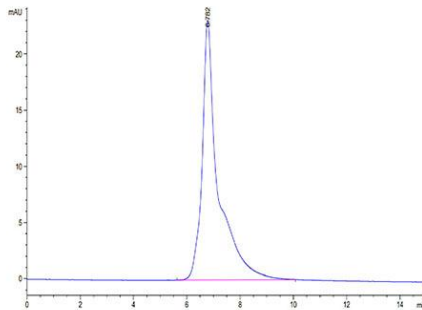
Properties

Synonyms:	CD3e, CD3E, T3E, FLJ18683, TCRE, CD3-epsilon, IMD18
Gene ID:	102133065
Endotoxin:	< 1 EU/µg of the protein by LAL method.
Description:	High quality, high purity and low endotoxin recombinant Recombinant Cynomolgus CD3 epsilon/CD3E Protein (RPCB1307), tested reactivity in HEK293 cells and has been validated in SDS-PAGE. 100% guaranteed.
Purity:	≥ 95 % as determined by Tris-Bis PAGE. ≥ 95 % as determined by HPLC.
Storage:	Store at -20°C. Store the lyophilized protein at -20°C to -80 °C up to 1 year from the date of receipt. After reconstitution, the protein solution is stable at -20°C for 3 months, at 2-8°C for up to 1 week.

Validation Data



Recombinant Cynomolgus CD3
epsilon/CD3E Protein was determined by Tris-
Bis PAGE under reducing conditions.



The purity of Cynomolgus CD3E is greater
than 95% as determined by SEC-HPLC.