

## Recombinant Human CCL8/MCP-2 Protein

RPCB1328

### Protein Information

---

<b>Size:</b>	10 µg , 20 µg , 50 µg , 100 µg	<b>Tag:</b>	No-Tag
<b>Reactivity:</b>	Human	<b>Expressed Host:</b>	-
<b>Calculated MW:</b>	8.91 kDa	<b>Observed MW:</b>	10-15 kDa

### Background

---

MCP-2 and MCP-3 are two monocyte chemotactic proteins produced by human MG-63 osteosarcoma cells. Both MCP-2 and MCP-3 are members of the C-C family of chemokines and share 62% and 71% amino acid sequence identity, respectively, with MCP-1. MCP-3 also shares 58% amino acid identity with MCP-2. Similarly to other C-C chemokines, all three MCP proteins are monocyte chemoattractants. In addition, the three MCPs can chemoattract activated NK cells as well as CD4+ and CD8+ T lymphocytes.

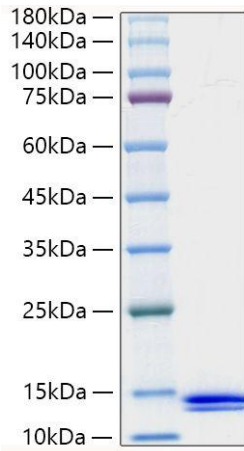
### Properties

---

<b>Synonyms:</b>	CCL8, MCP2, SCYA10, SCYA8, C-C motif chemokine 8, HC14, Monocyte chemoattractant protein 2, Monocyte chemotactic protein 2, MCP-2, Small-inducible cytokine A8, Cleaved into: MCP-2(6-76)
<b>Gene ID:</b>	6355
<b>Endotoxin:</b>	< 0.1 EU/µg of the protein by LAL method.
<b>Description:</b>	High quality, high purity and low endotoxin recombinant Recombinant Human CCL8/MCP-2 Protein (RPCB1328), tested reactivity in Pichia and has been validated in SDS-PAGE. 100% guaranteed.
<b>Purity:</b>	≥ 90% as determined by SDS-PAGE.
<b>Storage:</b>	Store at -20°C. Store the lyophilized protein at -20°C to -80 °C up to 1 year from the date of receipt. After reconstitution, the protein solution is stable at -20°C for 3 months, at 2-8°C for up to 1 week.

## Validation Data

---



Recombinant Human CCL8/MCP-2 Protein was determined by SDS-PAGE under reducing conditions with Coomassie Blue.