

## Recombinant Rat CCL2/MCP-1 Protein

RPCB1407

### Protein Information

---

<b>Size:</b>	20 µg , 50 µg , 100 µg	<b>Tag:</b>	C-His
<b>Reactivity:</b>	Rat	<b>Expressed Host:</b>	HEK293 cells
<b>Calculated MW:</b>	14.91 kDa	<b>Observed MW:</b>	35-40 kDa

### Background

---

-

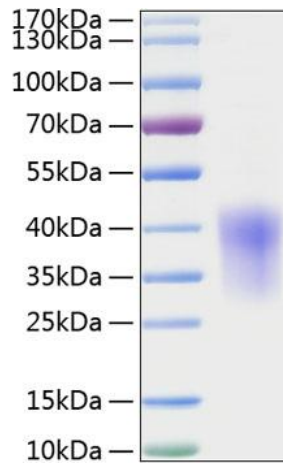
### Properties

---

<b>Synonyms:</b>	C-C motif chemokine ligand 2, CCL2, GDCF-2, HC11, HSMCR30, MCAF, Mcp1, MCP-1, SCYA2, SMC-CF, Ccl2/MCP1
<b>Gene ID:</b>	24770
<b>Endotoxin:</b>	< 0.1 EU/µg of the protein by LAL method.
<b>Description:</b>	High quality, high purity and low endotoxin recombinant Recombinant Rat CCL2/MCP-1 Protein (RPCB1407), tested reactivity in HEK293 cells and has been validated in SDS-PAGE. 100% guaranteed.
<b>Purity:</b>	≥ 95 % as determined by SDS-PAGE.
<b>Storage:</b>	Store at -20°C. Store the lyophilized protein at -20°C to -80 °C up to 1 year from the date of receipt. After reconstitution, the protein solution is stable at -20°C for 3 months, at 2-8°C for up to 1 week.

## Validation Data

---



Recombinant Rat CCL2/MCP-1 Protein was determined by SDS-PAGE under reducing conditions with Coomassie Blue.