

## Recombinant Human Integrin beta-6/ITGB6 Protein

RPCB1419

### Protein Information

---

<b>Size:</b>	20 µg , 50 µg , 100 µg	<b>Tag:</b>	C-His
<b>Reactivity:</b>	Human	<b>Expressed Host:</b>	HEK293 cells
<b>Calculated MW:</b>	75.14 kDa	<b>Observed MW:</b>	80-115 kDa

### Background

---

ITGB6 is known to be one of the major receptor components involved in host tropism of foot-and-mouth disease (FMD) virus in cattle. A competitive PCR technique called ARMS PCR was adapted to identify a single-nucleotide polymorphism (SNP), G29A, db SNP Id: rs109075046, in the 5' untranslated region (5'UTR) of the bovine ITGB6 gene.

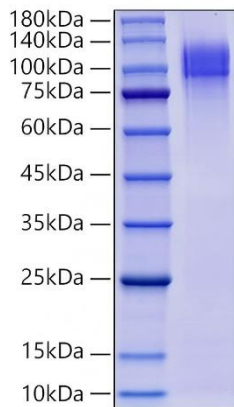
### Properties

---

<b>Synonyms:</b>	ITGB6, AI1H
<b>Gene ID:</b>	3694
<b>Endotoxin:</b>	< 1 EU/µg of the protein by LAL method.
<b>Description:</b>	High quality, high purity and low endotoxin recombinant Recombinant Human Integrin beta-6/ITGB6 Protein (RPCB1419), tested reactivity in HEK293 cells and has been validated in SDS-PAGE. 100% guaranteed.
<b>Purity:</b>	≥ 90 % as determined by SDS-PAGE; ≥ 95 % as determined by HPLC.
<b>Storage:</b>	Store at -20°C. Store the lyophilized protein at -20°C to -80 °C up to 1 year from the date of receipt. After reconstitution, the protein solution is stable at -20°C for 3 months, at 2-8°C for up to 1 week.

## Validation Data

---



Recombinant Human Integrin beta-6/ITGB6

Protein was determined by SDS-PAGE under reducing conditions with Coomassie Blue.