

Recombinant Mouse Parathormone/PTH Protein

RPCB1462

Protein Information

Size:	10 µg , 20 µg , 50 µg , 100 µg	Tag:	No tag
Reactivity:	Mouse	Expressed Host:	E. coli
Calculated MW:	10.19 kDa	Observed MW:	15-18 kDa

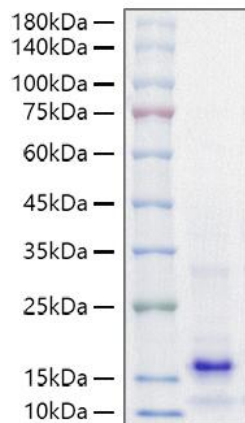
Background

Parathyroid hormone is the most important endocrine regulator of calcium and phosphorus concentration in extracellular fluid. This hormone is secreted from cells of the parathyroid glands and finds its major target cells in bone and kidney. Another hormone, parathyroid hormone-related protein, binds to the same receptor as parathyroid hormone and has major effects on development. Like most other protein hormones, parathyroid hormone is synthesized as a prehormone. After intracellular processing, the mature hormone is packaged within the Golgi into secretory vesicles, then secreted into blood by exocytosis. Parathyroid hormone is secreted as a linear protein of 84 amino acids.

Properties

Synonyms:	Parathyroid Hormone, PTH, Parathormone, Parathyrin, PTH
Gene ID:	19226
Endotoxin:	< 0.1 EU/µg of the protein by LAL method.
Description:	High quality, high purity and low endotoxin recombinant Recombinant Mouse Parathormone/PTH Protein (RPCB1462), tested reactivity in E. coli and has been validated in SDS-PAGE. 100% guaranteed.
Purity:	≥ 95 % as determined by SDS-PAGE.
Storage:	Store at -20°C. Store the lyophilized protein at -20°C to -80 °C up to 1 year from the date of receipt. After reconstitution, the protein solution is stable at -20°C for 3 months, at 2-8°C for up to 1 week.

Validation Data



Recombinant Mouse Parathormone/PTH
Protein was determined by SDS-PAGE under reducing conditions with Coomassie Blue.