

Recombinant Mouse SIRPB1A Protein

RPCB1512

Protein Information

Size:	10 µg , 20 µg , 50 µg , 100 µg	Tag:	C-6His
Reactivity:	Mouse	Expressed Host:	HEK293 cells
Calculated MW:	38.39 kDa	Observed MW:	55-65 kDa

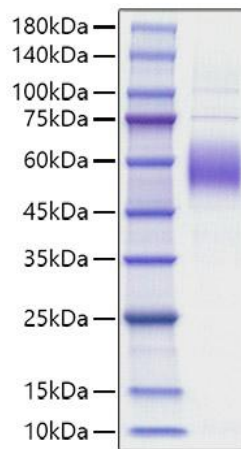
Background

SIRPB1A (Signal-regulatory protein beta 1A), also known as SIRP beta 1, belongs to signal-regulatory-protein (SIRP) family, and immunoglobulin superfamily. Signal-regulatory proteins (SIRPs) are cell-surface glycoproteins expressed on myeloid and neural cells that have been shown to recruit SH2 domain-containing protein phosphatase 1 (SHP-1) and SHP-2 and to regulate receptor tyrosine kinase-coupled signaling.

Properties

Synonyms:	Sirpb, Sirpb1, SIRP-beta, 9930027N05Rik
Gene ID:	320832
Endotoxin:	< 0.1 EU/µg of the protein by LAL method.
Description:	High quality, high purity and low endotoxin recombinant Recombinant Mouse SIRPB1A Protein (RPCB1512), tested reactivity in HEK293 cells and has been validated in SDS-PAGE. 100% guaranteed.
Purity:	≥ 90 % as determined by SDS-PAGE.
Storage:	Store at -20°C. Store the lyophilized protein at -20°C to -80 °C up to 1 year from the date of receipt. After reconstitution, the protein solution is stable at -20°C for 3 months, at 2-8°C for up to 1 week.

Validation Data



Recombinant Mouse SIRPB1A Protein was determined by SDS-PAGE under reducing conditions with Coomassie Blue.