

## Recombinant Human CCL3/MIP-1 alpha Protein

RPCB1647

### Protein Information

---

<b>Size:</b>	10 µg , 20 µg , 50 µg , 100 µg	<b>Tag:</b>	C-His
<b>Reactivity:</b>	Human	<b>Expressed Host:</b>	HEK293 cells
<b>Calculated MW:</b>	8.63 kDa	<b>Observed MW:</b>	10-15 kDa

### Background

---

This protein, also known as macrophage inflammatory protein 1 alpha, plays a role in inflammatory responses through binding to the receptors CCR1, CCR4 and CCR5. Polymorphisms at this locus may be associated with both resistance and susceptibility to infection by human immunodeficiency virus type 1.

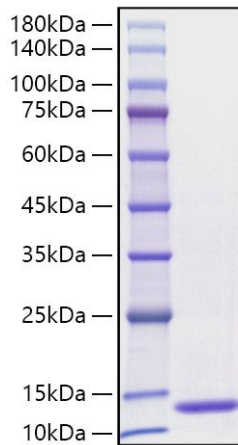
### Properties

---

<b>Synonyms:</b>	CCL3, G0S19-1, LD78ALPHA, MIP-1-alpha, MIP1A, SCYA3
<b>Gene ID:</b>	6348
<b>Endotoxin:</b>	< 0.1 EU/µg of the protein by LAL method.
<b>Description:</b>	High quality, high purity and low endotoxin recombinant Recombinant Human CCL3/MIP-1 alpha Protein (RPCB1647), tested reactivity in HEK293 cells and has been validated in SDS-PAGE. 100% guaranteed.
<b>Purity:</b>	≥ 95 % as determined by SDS-PAGE.
<b>Storage:</b>	Store at -20°C. Store the lyophilized protein at -20°C to -80 °C up to 1 year from the date of receipt. After reconstitution, the protein solution is stable at -20°C for 3 months, at 2-8°C for up to 1 week.

## Validation Data

---



Recombinant Human CCL3/MIP-1 alpha  
Protein was determined by SDS-PAGE under  
reducing conditions with Coomassie Blue.