

Recombinant Human CRTAM/CD355 (A65V) Protein

RPCB1664

Protein Information

Size:	10 µg , 20 µg , 50 µg , 100 µg	Tag:	C-His
Reactivity:	Human	Expressed Host:	HEK293 cells
Calculated MW:	30.77 kDa	Observed MW:	45-65 kDa

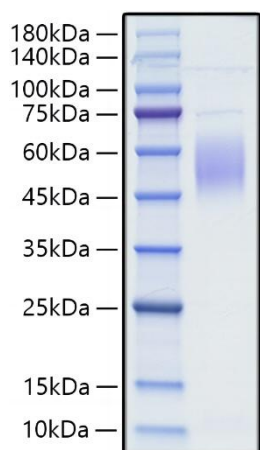
Background

Class-I Restricted T Cell-Associated Molecule (CRTAM) is a protein that is expressed after T cell activation. The interaction of CRTAM with its ligand, nectin-like 2 (Nectin2), is required for the efficient production of IL-17, IL-22, and IFN γ by murine CD4 T cells, and it plays a role in optimal CD8 T and NK cell cytotoxicity. CRTAM promotes the pro-inflammatory cytokine profile; therefore, it may take part in the immunopathology of autoimmune diseases such as diabetes type 1 or colitis.

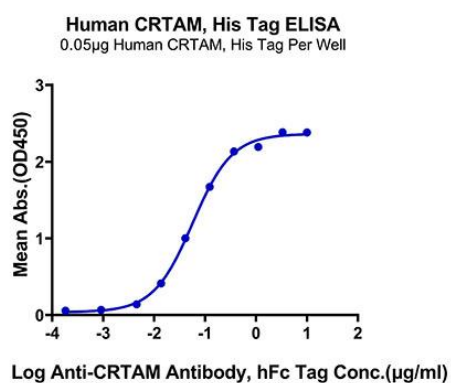
Properties

Synonyms:	CD355 antigen, CD355, CRTAM
Gene ID:	56253
Endotoxin:	< 0.01 EU/µg of the protein by LAL method
Description:	High quality, high purity and low endotoxin recombinant Recombinant Human CRTAM/CD355 (A65V) Protein (RPCB1664), tested reactivity in HEK293 cells and has been validated in SDS-PAGE. 100% guaranteed.
Purity:	≥ 95 % as determined by SDS-PAGE.
Storage:	Store at -20°C. Store the lyophilized protein at -20°C to -80 °C up to 1 year from the date of receipt. After reconstitution, the protein solution is stable at -20°C for 3 months, at 2-8°C for up to 1 week.

Validation Data



Recombinant Human CRTAM/CD355 (A65V)
Protein was determined by SDS-PAGE under reducing conditions with Coomassie Blue.



Immobilized Human CRTAM, His Tag at 0.5µg/ml (100µl/Well) on the plate. Dose response curve for Anti-CRTAM Antibody, hFc Tag with the EC50 of 57.3ng/ml determined by ELISA.