

## Recombinant Mouse IL-15 Protein

RPCB1732

### Description

---

This high-purity Recombinant Mouse IL-15 Protein is supplied as a kit for advanced applications. The kit includes Bradford Reagent to quantify total protein concentration for accurate sample normalization (Optional).

### Protein Information

---

<b>SKU:</b>	RPCB1732
<b>Contents:</b>	10 µg, 20 µg, 50 µg, 100 µg Bradford Reagent: 1 vial (2ml)
<b>Synonyms:</b>	Il15, Interleukin-15, IL-15
<b>Species:</b>	Mouse
<b>Gene ID:</b>	16168
<b>Expression Host:</b>	E. coli
<b>Tags:</b>	C-6His
<b>Calculated MW:</b>	14.09 kDa
<b>Observed MW:</b>	14 kDa
<b>Purification:</b>	≥ 95 % as determined by SDS-PAGE.
<b>Endotoxin:</b>	< 1 EU/µg of the protein by LAL method.
<b>Formulation:</b>	Lyophilized from a 0.22 µm filtered solution of PBS, pH 7.4.
<b>Bio- Activity:</b>	1. Measured in a cell proliferation assay using HT-2 mouse T cells. The ED 50 for this effect is 15-58 ng/mL, corresponding to a specific activity of $1.72 \times 10^4$ - $6.67 \times 10^4$ units/mg. 2. Measured in a cell proliferation assay using CTLL-2 mouse T cells. The ED50 for this effect is 8.1-32.4ng/mL, corresponding to a specific activity of $3.09 \times 10^4$ ~ $1.23 \times 10^5$ units/mg.

**Manufacturers Statement - This final kit system is assembled and quality-released by Assay Genie Limited**

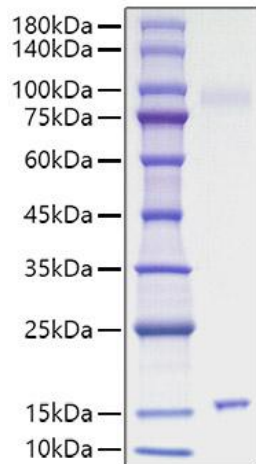
## Preparation & Storage

---

- Shipping:** The product is shipped at ambient temperature. Upon receipt, store it immediately at the temperature recommended below.
- Storage:** Store at -20°C. Store the lyophilized protein at -20°C to -80 °C up to 1 year from the date of receipt. After reconstitution, the protein solution is stable at -20°C for 3 months, at 2-8°C for up to 1 week.  
Store Bradford Reagent at Room Temperature for 1 Year.
- Reconstitution:** Centrifuge the vial before opening. Reconstitute to a concentration of 0.1-0.5 mg/mL in sterile distilled water. Avoid vortex or vigorously pipetting the protein. For long term storage, it is recommended to add a carrier protein or stabilizer (e.g. 0.1% BSA, 5% HSA, 10% FBS or 5% Trehalose), and aliquot the reconstituted protein solution to minimize free-thaw cycles.
- Protein Quantification (Optional):** To quantify total protein levels, use the Bradford Reagent included in this kit. Visit <https://www.assaygenie.com/bradford-protein-assay-protocol/> to view the full protocol.

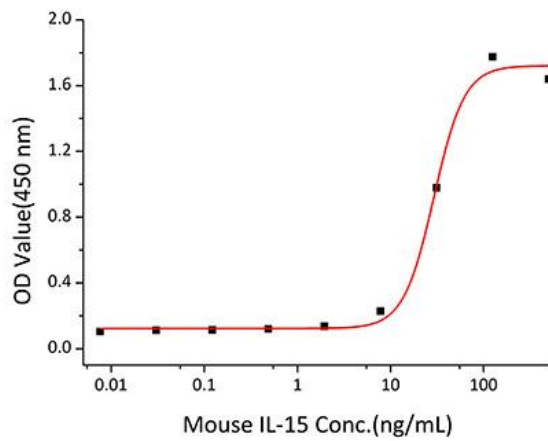
## Validation Data

### Image



### Description

Recombinant Mouse IL-15 Protein was determined by SDS-PAGE under reducing conditions with Coomassie Blue.



Recombinant Mouse IL-15 stimulates cell proliferation of the HT-2 mouse T cells. The ED50 for this effect is 15-58 ng/mL, corresponding to a specific activity of  $1.72 \times 10^4$ - $6.67 \times 10^4$  units/mg.