

Recombinant Rat IL-1 beta Protein

RPCB1851

Description

This high-purity Recombinant Rat IL-1 beta Protein is supplied as a kit for advanced applications. The kit includes Bradford Reagent to quantify total protein concentration for accurate sample normalization (Optional).

Protein Information

| | |
|-------------------------|--|
| SKU: | RPCB1851 |
| Contents: | 10 µg, 20 µg, 50 µg, 100 µg Bradford Reagent: 1 vial (2ml) |
| Synonyms: | IL-1F2, IL-1 beta, IL1B, IL-1BETA, IL1F2, IL-1β, il1b, IL1B |
| Species: | Rat |
| Gene ID: | 24494 |
| Expression Host: | HEK293 cells |
| Tags: | C-His |
| Calculated MW: | 18.16 kDa |
| Observed MW: | 18-25 kDa |
| Purification: | ≥ 85 % as determined by SDS-PAGE. |
| Endotoxin: | < 1 EU/µg of the protein by LAL method. |
| Formulation: | Lyophilized from a 0.22 µm filtered solution of PBS, pH 7.4. |
| Bio- Activity: | Recombinant Rat IL-1 beta Protein stimulates cell proliferation of the D10.G4.1 mouse helper T cell line. The ED 50 for this effect is 0.68-2.72 ng/mL, corresponding to a specific activity of $3.68 \times 10^5 \sim 1.47 \times 10^6$ units/mg. |

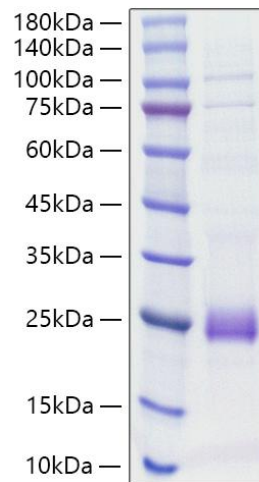
Manufacturers Statement - This final kit system is assembled and quality-released by Assay Genie Limited

Preparation & Storage

- Shipping:** The product is shipped at ambient temperature. Upon receipt, store it immediately at the temperature recommended below.
- Storage:** Store at -20°C. Store the lyophilized protein at -20°C to -80 °C up to 1 year from the date of receipt. After reconstitution, the protein solution is stable at -20°C for 3 months, at 2-8°C for up to 1 week.
Store Bradford Reagent at Room Temperature for 1 Year.
- Reconstitution:** Centrifuge the vial before opening. Reconstitute to a concentration of 0.1-0.5 mg/mL in sterile distilled water. Avoid vortex or vigorously pipetting the protein. For long term storage, it is recommended to add a carrier protein or stabilizer (e.g. 0.1% BSA, 5% HSA, 10% FBS or 5% Trehalose), and aliquot the reconstituted protein solution to minimize free-thaw cycles.
- Protein Quantification (Optional):** To quantify total protein levels, use the Bradford Reagent included in this kit. Visit <https://www.assaygenie.com/bradford-protein-assay-protocol/> to view the full protocol.

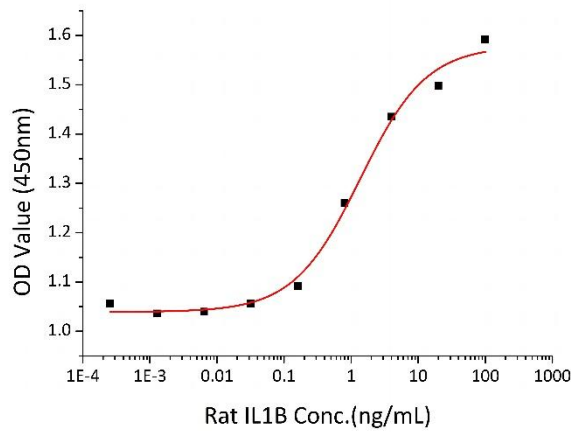
Validation Data

Image



Description

Recombinant Rat IL-1 beta Protein was determined by SDS-PAGE under reducing conditions with Coomassie Blue.



Recombinant Rat IL-1 beta Protein stimulates cell proliferation of the D10.G4.1 mouse helper T cell line. The ED50 for this effect is 0.68-2.72 ng/mL, corresponding to a specific activity of $3.68 \times 10^5 \sim 1.47 \times 10^6$ units/mg.