

Recombinant Human XPNPEP3 Protein

RPCB2037

Protein Information

Size:	50 µg	Tag:	N, C-6His
Reactivity:	Human	Expressed Host:	E. coli
Calculated MW:	60.2 KDa	Observed MW:	65 KDa

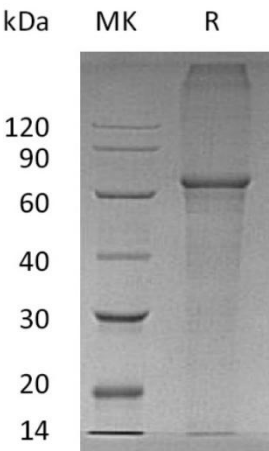
Background

Probable Xaa-Pro Aminopeptidase 3 (XPNPEP3) is a member of the peptidase M24B family. XPNPEP3 has two isoforms and both are widely expressed. XPNPEP3 is localized in the Mitochondrion. XPNPEP3 catalyzes the release of any N-terminal amino acid, including proline, that is linked to proline, even from a dipeptide or tripeptide. Defects in XPNPEP3 are the cause of nephronophthisis-like nephropathy type 1 which is a disorder with features of nephronophthisis, a cystic kidney disease leading to end-stage renal failure.

Properties

Synonyms:	Probable Xaa-Pro Aminopeptidase 3, X-Pro Aminopeptidase 3, Aminopeptidase P3, APP3, XPNPEP3
Gene ID:	63929
Endotoxin:	< 1 EU/µg of the protein by LAL method.
Description:	High quality, high purity and low endotoxin recombinant Recombinant Human XPNPEP3 Protein (RP03207LQ), tested reactivity in E. coli and has been validated in SDS-PAGE. 100% guaranteed.
Purity:	≥ 95 % as determined by SDS-PAGE.
Storage:	Store at -70°C. This product is stable at ≤ -70°C for up to 1 year from the date of receipt. For optimal storage, aliquot into smaller quantities after centrifugation and store at recommended temperature. Avoid repeated freeze-thaw cycles.

Validation Data



Recombinant Human XPNPEP3 Protein was determined by SDS-PAGE under reducing conditions with Coomassie Blue.