

## Recombinant SARS-COV-2 Spike S1+S2 ECD (S-ECD) Protein

RPCB2131

### Protein Information

---

<b>Size:</b>	100 µg	<b>Tag:</b>	C-hFc
<b>Reactivity:</b>	SARS-COV-2	<b>Expressed Host:</b>	HEK293 cells
<b>Calculated MW:</b>	158.3 kDa	<b>Observed MW:</b>	230-250 kDa

### Background

---

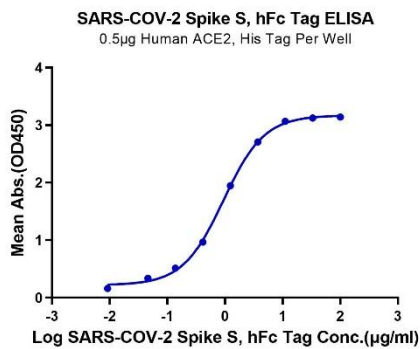
-

### Properties

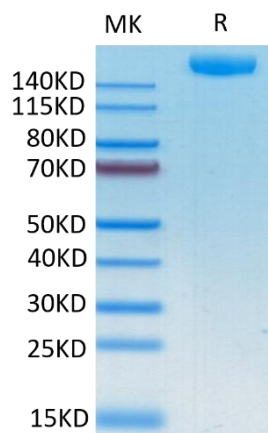
---

<b>Synonyms:</b>	S protein, Spike glycoprotein, S glycoprotein, COVID-19
<b>Gene ID:</b>	43740568
<b>Endotoxin:</b>	< 1 EU/µg of the protein by LAL method.
<b>Description:</b>	High quality, high purity and low endotoxin recombinant Recombinant SARS-COV-2 Spike S1+S2 ECD (S-ECD) Protein (RPCB2131), tested reactivity in HEK293 cells and has been validated in SDS-PAGE. 100% guaranteed.
<b>Purity:</b>	≥ 95 % as determined by Tris-Bis PAGE; ≥ 95 % as determined by HPLC.
<b>Storage:</b>	Store at -20°C. Store the lyophilized protein at -20°C to -80 °C up to 1 year from the date of receipt. After reconstitution, the protein solution is stable at -20°C for 3 months, at 2-8°C for up to 1 week.

Validation Data



Immobilized Human ACE2,His Tag at 5µg/ml (100µl/Well). Dose response curve for SARS-COV-2 Spike S,hFc Tag with the EC50 of 0.9µg/ml determined by ELISA.



Recombinant SARS-COV-2 Spike S1+S2 ECD (S-ECD) Protein was determined by Tris-Bis PAGE under reducing conditions.